



SLA

Connecting Information
Professionals

SLA 2022 Annual Conference

SOURCE FORWARD

July 31 – August 2, 2022

Program Guide

Bienvenue - Welcome to the SLA: Source Forward 2022 Conference!



**Catherine
Lavallée-Welch**
SLA President

First, let me say thank you. Thank you for taking the time to take care of yourself. Thank you for taking the opportunity to help others. You are moving forward in your home community and in our community of peers. That forward movement is a key takeaway for our 2022 annual conference. Whether you are in Charlotte or joining virtually, you will attend top-notch educational sessions, hear thought-provoking keynotes, learn about field developments in the INFO-EXPO, network with peers, and more. Thank you, for it is that sharing of yourself that makes every SLA conference great.

Information professionals are experts at researching, analyzing, organizing and providing – one may say sourcing – information to stakeholders. Here, this week, the experts of our field have joined together to source and share information to a very select group of stakeholders – ourselves. It is here that we meet our peers, forge new and stronger bonds, and help grow the future of our field.

It is here we will take the actions needed to ensure our own advancement in our chosen field. It is this conference where we will spark new ideas, share proven methods, and return to our jobs better informed for the future.

So, again, I say thank you. Thank you for making the 2022 SLA annual conference a place where information professionals do what they do best --- research, analyze, organize and share information. Here's to all that and to meeting old and new friends.



Janel Kinlaw
*2022 Annual
Conference
Advisory
Council Chair*

On behalf of the Annual Conference Advisory Council (ACAC) and the Carolinas Community, welcome to SLA 2022: Source Forward. This year we are thrilled to offer both in-person activities and virtual elements to the conference program. We hope you are able to connect with other SLA members both in-person and virtually and learn new things from the education sessions and keynote speakers.

Table of Contents

Welcome.....	2
Sponsors	4
Schedule	5
Hot Topics / Exhibition Showcase	8
Exhibitors	10
Floorplans	11



NETWORK: SLA2022

PASSWORD: SOURCEFORWARD

Thank You to Our Sponsors

SILVER SPONSOR



GENERAL CONFERENCE SUPPORTERS



COMMUNITY SPONSORS



food and health
information



Dr. David Mandel

2022 Annual Conference Schedule-at-a-Glance

To view the full schedule and get an inside look into each session, scan the QR code. To scan the QR code, open up the camera on your phone or mobile device and hover over the code. A link will pop up directing you to the site.



Saturday, July 30 (Pre-conference)

TIME	SESSION
N/A	On-Demand Presentations
8:00 AM - 1:00 PM	Board of Directors Retreat
9:00 - 10:00 AM	Community Meetings and Events
1:30 - 3:00 PM	First-Timers and New Members Orientation
3:00 - 4:30 PM	Community Leaders Meet and Greet
5:30 - 9:00 PM	Community Meetings and Events

FACT

Join us at booth 200 to discover what's new with Dow Jones Factiva!



D DOW JONES
FACTIVA

2022 Annual Conference Schedule-at-a-Glance

Sunday, July 31

TIME	SESSION
7:00 - 8:45 AM	Community Meetings and Events
8:45 - 9:00 AM	Connection and Comfort Break
9:00 - 10:05 AM	Concurrent Sessions
10:05 - 10:30 AM	Connection and Comfort Break
10:30 AM - 12:00 PM	Welcome and Opening Keynote Session
12:00 - 7:00 PM	INFO-EXPO Open
12:00 - 2:30 PM	INFO-EXPO Opening and Lunch
12:30 - 2:00 PM	Community Meetings and Events
2:30 - 4:05 PM	Concurrent Sessions
4:05 - 4:30 PM	Connection and Comfort Break
4:30 - 5:30 PM	Concurrent Sessions
5:30 - 7:00 PM	Opening Reception (INFO-EXPO)
6:00 - 7:00 PM	SLA Fellows Welcome First-Timers Reception (INFO-EXPO)
7:00 - 8:30 PM	Community Meetings and Events

Monday, August 1

TIME	SESSION
7:00 - 8:45 AM	Community Meetings and Events
8:45 - 9:00 AM	Connection and Comfort Break
9:00 - 10:05 AM	Concurrent Sessions
10:00 AM - 3:00 PM	INFO-EXPO Open
10:05 - 10:30 AM	Connection and Comfort Break
10:30 AM - 12:00 PM	General and Keynote Session
12:00 - 2:30 PM	INFO-EXPO and Lunch
12:30 - 2:00 PM	Community Meetings and Events
2:30 - 4:05 PM	Concurrent Sessions
4:05 - 4:30 PM	Connection and Comfort Break

2022 Annual Conference Schedule-at-a-Glance

Monday, August 1 contd.

TIME	SESSION
4:30 - 5:30 PM	Concurrent Sessions
5:30 - 8:30 PM	Community Meetings and Events
9:00 - 11:00 PM	SLA Dance Party (formerly IT)

Tuesday, August 2

TIME	SESSION
7:30 - 8:45 AM	Community Meetings and Events
8:45 - 9:00 AM	Connection and Comfort Break
9:00 - 10:05 AM	Concurrent Sessions
10:00 - 1:30 PM	INFO-EXPO Open
10:05 - 10:30 AM	Connection and Comfort Break
10:30 - 11:30 AM	Concurrent Sessions
11:30 AM - 1:30 PM	INFO-EXPO and Lunch
12:00 - 1:00 PM	Community Meetings and Events
1:30 - 3:00 PM	Closing and Keynote Session
3:30 - 7:30 PM	Community Meetings and Events

Wednesday, August 3

TIME	SESSION
10:00 AM - 12:00 PM	Community Meetings and Events

Hot Topics / Exhibition Showcase

Hot Topic Discussion

Sunday, July 31st 3:35 - 4:05 PM

W207 AB in the Charlotte Convention Center

(West Wing Meeting Level)

How to Create A Cloud-based Portal For Acquisition and Discovery?

You're probably already using a cloud-based tool such as SharePoint to manage your corporate subscriptions, and to manage access to those subscriptions. But how effective is your solution really? Do you get quick responses from your IT team, and does an all-purpose tool really meet the objectives of managing a complex information portfolio?

Cloud computing has become ubiquitous, and so has its benefits, but what's sometimes missed is how a focused cloud tool can deliver a much better solution to a specific challenge. In this article, we outline why Couranto's purpose-built information management portal delivers a much-needed, focused cloud solution for information management professionals.

Without access to a purpose-built tool, information leaders will understandably use available tools to get the job done. Perhaps a mix of Excel sheets and PDFs across countless folders, or something more centralized, such as an online portal that already exists within corporate IT.

Indeed, here at Couranto we've found that SharePoint is one of the common tools organizations use to manage an information portfolio. It's easy to see why. After all, SharePoint captures many of the benefits of getting stuff done in the cloud: it's accessible anywhere, it can be user managed to a degree, and it's certainly flexible.

The logo for Couranto, featuring the word "couranto" in a bold, lowercase, orange sans-serif font. The letters are slightly rounded and have a modern, clean feel. The background of the entire page features a faint, light gray geometric pattern of interconnected lines and dots, resembling a network or a molecular structure.

Exhibition Showcase

EBSCO Discovery Service

Monday, August 1st 7:00 - 8:00 AM

Independence Room in the Westin Charlotte (2nd Floor)

Connecting the Dot's! Ensuring Your Valued Resources are Accessible

At a time of remote access and growing requirements for information – Everywhere and Anytime ... EBSCO is here to ensure we can help you connect the dots and search all the resources you value. The EBSCO Suite of modular solutions empower Knowledge Managers to meet the challenges of today with a platform that enables them to confidently plan for the future.

EBSCO Discover Service, Stacks, FOLIO, Panorama, LOCATE, OpenAthens, EBSCO

EBSCO

Monday, August 1st 12:30 - 12:50 PM

W201 ABCD in the Charlotte Convention Center

(West Wing Meeting Level)

What's New @ IEEE for Libraries: Driving Innovation Forward to a Brighter Future

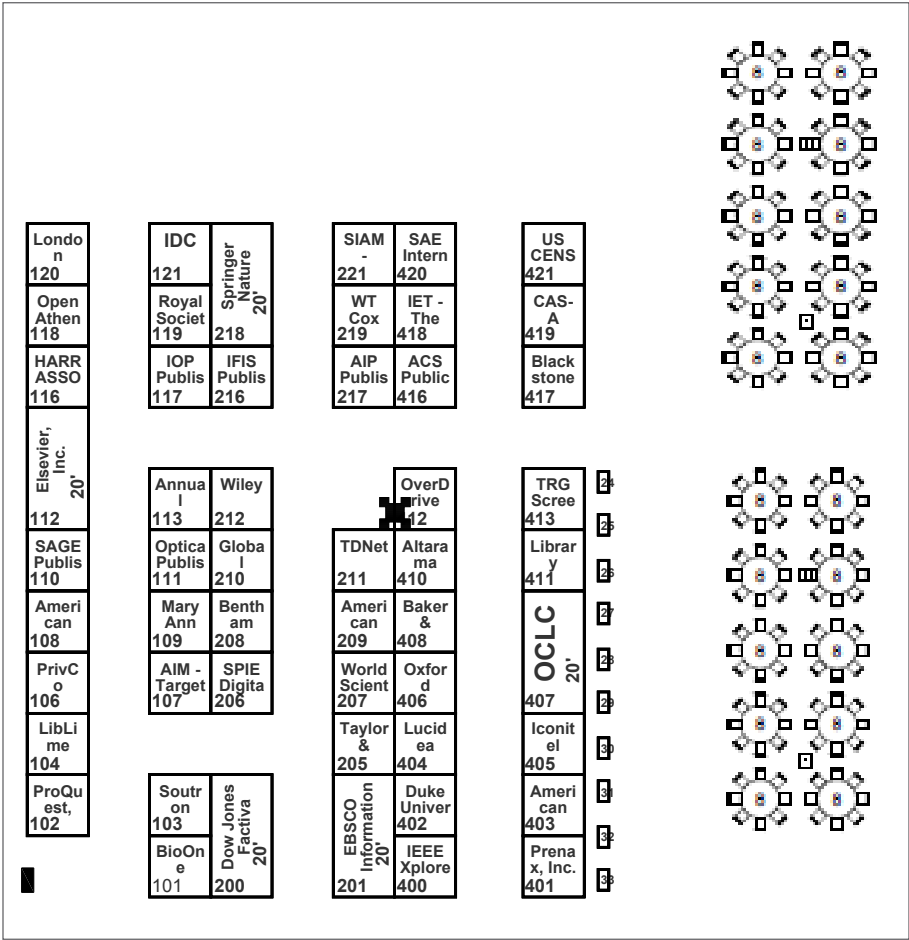
We invite you to join us for an informative session in which we will discuss new IEEE initiatives and products as well as important enhancements to the IEEE Xplore Digital Library. In an effort to help your library continue to successfully support the needs of students, faculty, and researchers, this session will cover important resources to help your patrons continue to excel in their research efforts and drive innovation forward.



Exhibitors

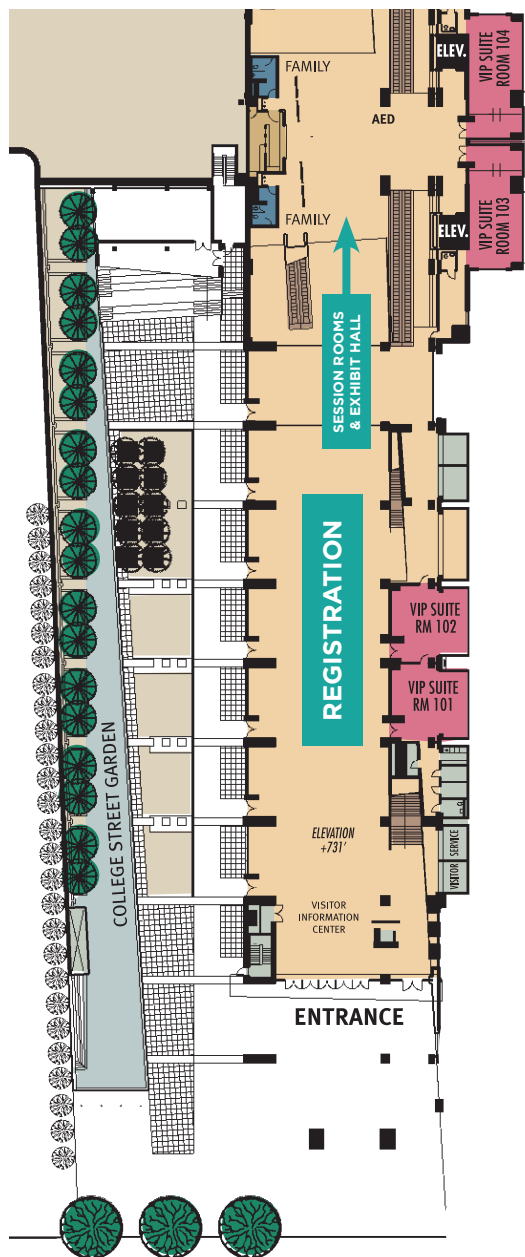
ACS Publications.....416	Services.....201	Oxford University Press 406
AIM Targeted Intelligence.....107	Elsevier, Inc..... 112	Prenax, Inc.401
AIP Publishing..... 217	Global Financial Data210	PrivCo106
Altarama Information Systems.....410	HARRASSOWITZ 116	Proquest102
American Economic Association.....108	Iconitel Consulting Services..... 405	Royal Society of Chemistry..... 119
American Institute of Aeronautics and Astronautics (AIAA)..... 209	IDC..... 121	SAE International.. 420
American Mathematical Society..... 403	IEEE Xplore® Digital Library and Continuing Education.....400	SAGE Publishing and Lean Library (A SAGE Publishing Co.) 110
Annual Reviews..... 113	IFIS Publishing 216	SIAM - Society for Industrial and Applied Mathematics 221
Baker & Taylor..... 408	IOP Publishing 117	Soutron Global103
Bentham Science Publishing.....208	LibLime 104	SPIE Digital Library 206
BioOne.....101	Library Juice Academy..... 411	Springer Nature 218
Blackstone Publishing..... 417	London Stock Exchange Group 120	Taylor & Francis Group205
CAS- A Division of the American Chemical Society..... 419	Lucidea..... 404	TDNet..... 211
Clarivate ProQuest, Part of Clarivate.....102	Mary Ann Liebert Inc. Publishers.....109	The Institution of Engineering and Technology (IET).... 418
Dow Jones Factiva..... 200	OCLC Online Computer Library Center407	US Census Bureau.. 421
Duke University Press and Project Euclid 402	OpenAthens..... 118	World Scientific Publishing.....207
EBSCO Information	Optica Publishing Group (formerly OSA)111	WT Cox Information Services..... 219
	OverDrive Professional..... 412	

Exhibition Hall A



Registration

Street Level, South College Street Entrance and Registration Area



Meeting Space

Sessions Space



STREET LEVEL:

- South College Street Entrance
- Registration

BALLROOM & MEETING ROOM LEVEL:

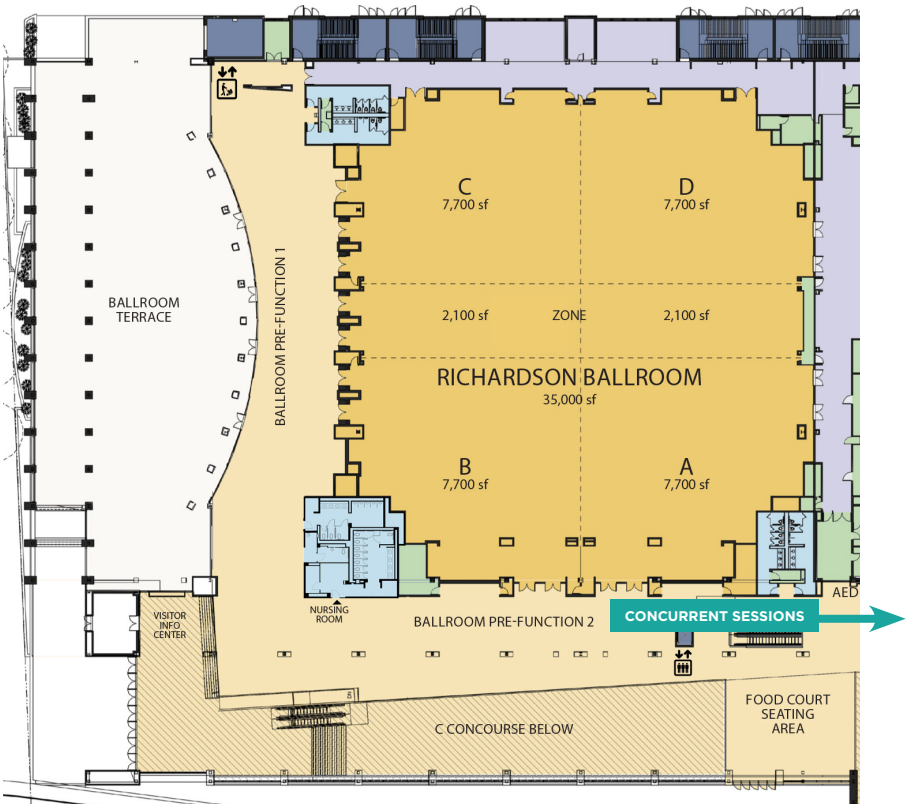
- Richardson Ballroom:
General Session, Concurrent Session 1
- West Meeting Wing:
Concurrent Sessions, Community Events

EXHIBIT LEVEL (LOWER):

- Exhibit Hall A
- Lunch
- Welcome Reception

Richardson Ballroom

General Session & Keynotes | Concurrent Session 1 Room



West Meeting Wing

Concurrent Sessions and Community Events



CONCURRENT SESSIONS

- 209EF** Concurrent Session 2 Room
- 209CD** Concurrent Session 3 Room
- 207CD** Concurrent Session 4 Room
- 207AB** Concurrent Session 5 Room
- 206AB** Concurrent Session 6 Room

Thank you for being here!



f in   | WWW.SLA.ORG