

# PHYSIATRY '26



*The future of physiatry happens here.*



February 17-21, 2026  
Puerto Rico  
Convention Center  
San Juan, Puerto Rico

Welcome to the Association of Academic Physiatrists' 59th Annual Meeting!

A photograph of several people, mostly men, gathered around a table in a conference setting. They are looking at a laptop and a monitor, with one man pointing at the screen. The image is overlaid with a semi-transparent green filter.

# The future of physiatry happens here!



Connect, Discover, Share: #Physiatry26  
[PHYSIATRY.ORG/ANNUALMEETING](http://PHYSIATRY.ORG/ANNUALMEETING)



# WELCOME TO PHYSIATRY '26 – THE AAP'S ANNUAL MEETING.

## It's Your Time to Shine!

### TABLE OF CONTENTS

General Information .....5  
Schedule-at-a-Glance ..... 8-9  
Plenary Speakers ..... 11  
Pre-Conference Workshops .....13-15  
Residency & Fellowship Program Directors (RFPD)  
Workshop & Sessions ..... 17

### DAILY SCHEDULES

Thursday, February 19.....20-24  
Friday, February 20 ..... 25-28  
Saturday, February 21 ..... 29-31

New Knowledge Sessions ..... 32  
Poster Gallery Receptions .....37  
Networking Events ..... 39  
Activities in the Expo Hall .....41  
Award Winners ..... 42-43  
Sponsored Activities.....46-47  
Exhibitor Guide .....50-52  
Physiatry 2027 Save the Date..... 53  
Puerto Rico Convention Center Area Map .....57  
AAP Academic Partners ..... 59  
Physiatry Foundation Activities..... 63  
Our Sponsors ..... BC

### REGISTRATION HOURS

The AAP Registration Desk is located in the pre-function area on the first floor of the Puerto Rico Convention Center in front of the Expo Hall.

Monday ..... 1:00PM – 6:00PM  
Tuesday through Friday .....7:00AM – 5:00PM  
Saturday .....7:00AM – 11:00AM

### EXHIBIT HALL ACTIVITIES

The Expo Hall is located on the first floor of the Puerto Rico Convention Center next to registration. Find even more activities on 41.

### Thursday, February 19

Learning Labs.....10:30AM – 11:30AM & 3:00PM – 4:00PM  
Lunch & Learn.....12:30PM – 1:30PM  
President's Welcome Reception ..... 6:30PM – 8:00PM

### Friday, February 20

Refreshments & Demo Pods.....10:30PM – 11:15PM &  
3:40PM – 4:00PM  
Lunch & Learn.....12:30PM – 2:00PM

### SATURDAY, FEBRUARY 21

Snacks and Farewell to Exhibitors ..... 11:15AM – 12:00PM



### SPONSORED ACTIVITIES

Enjoy complimentary food and beverages at our sponsored events, including Lunch & Learns, Demonstration Pods, and Labs. Find details on page 46!



### GET SOCIAL

There is a vibrant social media community waiting to connect with you! Use the hashtag #Physiatry26 to see updates, build relationships and share your memories.



### DOWNLOAD THE EVENT APP

POWERED BY:  

Get every session, event, and update from Physiatry '26 delivered to your phone. You'll also be able to customize your daily schedule, access course handouts, connect with attendees and more. Search for Physiatry '26 or AAP in your app store. Aren't sure of your login information? Visit the Registration Desk on the first floor of the convention center, and we'll help you get connected!

On behalf of the Association of Academic Physiatrists (AAP), we're thrilled to have you join us in one of the most vibrant cities in the Caribbean. This year's meeting brings more engagement, more innovation, and more opportunities to connect than ever, all in amid the warmth, culture, and unmistakable energy of San Juan.

Whether you're leading major research initiatives, shaping clinical practice, mentoring the next generation, or taking your first steps into the field, you belong here. Our community spans more than 3,000 dedicated professionals who bring curiosity, rigor, and heart to physiatry – and we're glad you're part of it.

### WHAT'S NEW & NOT TO MISS:

- 75+ curated educational sessions led by established experts and rising voices from around the world.
- A spotlight on Neuromodulation, this year's meeting theme, headlined by keynote speaker Prof. Friedhelm Hummel, bringing insights that push boundaries and spark cross-disciplinary dialogue.
- Expanded pre-conference offerings worth arriving early for:
  - The inaugural Pediatric Rehabilitation Symposium introducing fresh, practical approaches to care.
  - An interim gathering of the global spasticity community with Spasticity X: Momentum Lab, an interactive forum advancing the science, mechanisms, and innovation surrounding spasticity.
  - A collaborative skills session for inpatient physiatrists and medical directors focused on tackling real-world challenges together.
  - And a workshop giving new Program Directors and Coordinators the essentials they need to step into their role with confidence and become a Rockstar in the field
- Poster Gallery events featuring cutting-edge research, rich discussion, and spotlighted presentations.
- Networking events and community meet-ups for councils, committees, and colleagues across every stage of training and practice.
- Exhibits and experiences from our institution and industry partners, whose contributions make this meeting thrive.

As you dive into the science, the learning, and the camaraderie, take a moment to enjoy the beaches, music, cuisine, and culture just outside the convention doors.

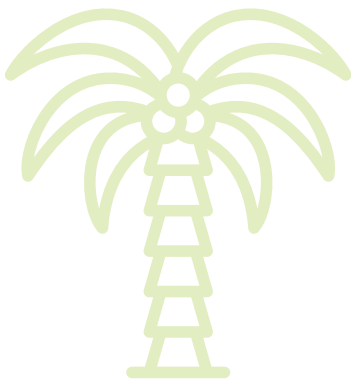


**Shanti Pinto, MD, MSCS**

*Chair, AAP Program Committee*

*Physician-Scientist, Department of Physical Medicine and Rehabilitation*

*Spaulding Rehabilitation Hospital, Boston, MA*







THERAPEUTICS

Better outcomes for more patients.

# MERZ THERAPEUTICS is proud to sponsor AAP 2026

Everything we do is in relentless pursuit of **better outcomes for more patients.**



Scan this QR code to  
learn more

Visit us at  
**BOOTH #401**

© 2025 Merz Pharmaceuticals, LLC. Merz and the Merz logo are registered trademarks of Merz Pharma GmbH & Co. KGaA. US-XET-2500092

## General Information

All workshops and sessions will be held at the Puerto Rico Convention Center unless noted otherwise.

### Registration

The Registration Desk is located in the pre-function area on the first floor of the Puerto Rico Convention Center next to the Expo Hall.

### Additional Fees

Throughout Psychiatry '26, there are events and sessions which may require additional fees to attend. To help you identify these sessions, look for this icon throughout the event program: 💰

### Photo & Video Disclosure

The AAP intends to take photos and video of this event for use in AAP news and promotional materials, in print, electronic and other media, including the website. By participating in this event, you grant the AAP the right to use any image, photograph, voice, or likeness without limitation in its promotional materials and publicity efforts without compensation. All media becomes the property of the AAP. Media may be displayed, distributed, or used by the AAP for any purpose.

### Seating Policy

All educational sessions are filled on a first-come, first-served basis. We did our best to match room size with anticipated demand, but we encourage you to arrive at the meeting rooms as early as possible. Capacity limits are strictly enforced by hotel management and fire marshals.

### Anti-Harassment Policy

The AAP is dedicated to providing a harassment-free experience for everyone at its conferences. Harassment of any form will not be tolerated. If you experience harassment or discrimination, please tell an AAP staff member immediately or email [report@psychiatry.org](mailto:report@psychiatry.org). Violators of this Anti-Harassment Policy may be sanctioned or expelled from the event at the discretion of Psychiatry '26 event organizers.

### Time Zone: Atlantic Standard Time (AST)

Please note all times listed are in AST.



## NEED WIFI?

Stay connected with our complimentary Wi-Fi access in all public areas of the Puerto Rico Convention Center! Just use our password **TIRR@AAP**. The password is case-sensitive, so **BE SURE TO USE ALL CAPS**.

SUPPORTED BY:



## DOWNLOAD OUR FREE MEETING PHONE APP



SCAN ME

Search "Psychiatry 26" or "AAP Meeting" on your phone's application store to download. The Psychiatry '26 event app has the latest session details, room assignments and poster presentations. Search sessions by day, track, speaker, title, or keyword to create an agenda that meets your interests and learning needs.

SUPPORTED BY:





# Making a difference today for their tomorrow



Patients and their loved ones are at the heart of our commitment to continue advancing neuroscience.

**See what we're doing at Booth #501**

© 2022 AbbVie. All rights reserved.  
US-NEUR-220054 05/22

abbvie

## Welcome to San Juan

Lead, Learn, and Unwind



**HOLA, SAN JUAN!** Get ready to experience the vibrant capital of Puerto Rico. San Juan offers the perfect blend of history, culture, and Caribbean beauty—all just steps away from Physiatry '26. From its colorful colonial streets and historic forts to pristine beaches and lively nightlife, San Juan is a destination that has it all.

### COASTAL ADVENTURES

Bask in the sun on golden beaches, snorkel in crystal-clear waters, or take a day trip to El Yunque National Forest, the only tropical rainforest in the U.S. National Forest System.

### CULTURE & HISTORY

Stroll through Old San Juan's cobblestone streets, explore 16th-century fortresses, or visit world-class museums showcasing Puerto Rico's rich heritage and contemporary art.

### A FLAVORFUL EXPERIENCE

From fresh-caught seafood to mofongo and craft cocktails, San Juan's dining scene blends local tradition with global flair. Cap off your evenings with live salsa, vibrant nightlife, or a quiet seaside sunset.



[DISCOVERPUERTORICO.COM](https://discoverpuertorico.com)

**HOTELS:** Sheraton Puerto Rico Resort & Casino, Aloft San Juan, Hilton Garden Inn San Juan Condado, Condado Plaza Hotel Puerto Rico, Hyatt House San Juan, and Hyatt Place San Juan

Visit [physiatry.org/AnnualMeeting](https://physiatry.org/AnnualMeeting) for hotel information, booking, and pricing.

**AIRPORT:** LUIS MUÑOZ MARÍN INTERNATIONAL AIRPORT (SJU)

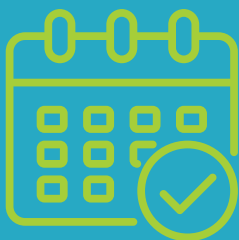
**CURRENCY:** \$ USD

**TIME ZONE:** ATLANTIC STANDARD TIME (AST)





# Schedule at a Glance



Take part in educational sessions, lively networking events, and spontaneous meet-and-greets. All events will be held at the Puerto Rico Convention Center unless noted otherwise. You'll find specific rooms on the event app, event website, or the detailed schedule in this program! Details on educational sessions provided Thursday through Saturday can be found on pages 20-31.

## MONDAY, FEBRUARY 16

1:00PM - 6:00PM Registration Open

## TUESDAY, FEBRUARY 17

7:00AM - 5:00PM Registration Open

8:45AM - 6:30PM Spasticity X: Momentum Lab - Day 1

12:00PM - 6:30PM Residency & Fellowship Program Directors (RFPD) and Coordinators - Day 1

## WEDNESDAY, FEBRUARY 18

7:00AM - 5:00PM Registration Open

7:00AM - 12:15PM Spasticity X: Momentum Lab - Day 2

8:00AM - 12:00PM Pre-Conference Workshop: Resident/Fellow Bootcamp

8:00AM - 12:00PM RFPD and Coordinators - Day 2

8:00AM - 12:00PM Pre-Conference Workshop: Leadership & Operational Skills for Inpatient Psychiatrists & Medical Directors

8:00AM - 5:00PM Pediatric Rehabilitation Symposium

1:00PM - 5:00PM Spasticity X MUSICA Workshop

1:00PM - 5:00PM Pre-Conference Workshop: Become a ROCKSTAR Program Director or Program Coordinator

5:30PM - 7:00PM Career Fair

**AAP PRO TIP:**  
This is a one-of-a-kind networking opportunity with 50+ institutions and hundreds of job seekers!

7:00PM - 9:00PM Joint Chairs/Administrative Directors Session & Reception

## THURSDAY, FEBRUARY 19

7:00AM - 5:00PM Registration Open

7:00AM - 8:00AM Hot Breakfast Symposium

8:15AM - 9:15AM Thursday Educational Sessions 1

**AAP PRO TIP:**  
Educational sessions are happening all around you Thursday-Saturday. Make note of the sessions you're interested in by visiting pages 19-31 or using the AAP Meetings mobile app.

9:30AM - 10:30AM **PLENARY SESSION: DeLisa Lecture - Innovative Neurotechnology Approaches for Advancing Neurorehabilitation**

10:30AM - 11:15AM EXPO HALL: Refreshments & Demo Pod

10:30AM - 11:30AM EXPO HALL: Learning Lab

11:15AM - 12:15PM Thursday Educational Sessions 2

12:30PM - 1:30PM EXPO HALL & Lunch & Learn

2:00PM - 3:00PM Thursday Educational Sessions 3

3:00PM - 3:45PM EXPO HALL: Refreshments & Demo Pod

3:30PM - 5:00PM Thursday Educational Sessions 4

5:00PM - 6:30PM Poster Gallery Reception

**AAP PRO TIP:**  
Attend the Poster Gallery Session and then head over to the President's Welcome Reception that begins afterward!

6:30PM - 8:00PM Welcome Reception

## FRIDAY, FEBRUARY 20

7:00AM - 5:00PM Registration Open

7:00AM - 8:00AM Coffee Chat

8:15AM - 9:15AM Friday Educational Sessions 1

9:30AM - 10:45AM **PLENARY SESSION: The Psychology of Courage and Inaction: Strategies for Fostering an Ethical Bystander**

10:30AM - 11:15AM EXPO HALL: Refreshments & Demo Pod

11:15AM - 12:15PM New Knowledge Sessions

12:30PM - 2:00PM EXPO HALL: Lunch & Learn

2:00PM - 3:00PM Friday Educational Sessions 2

3:00PM - 3:45PM EXPO HALL: Refreshments & Demo Pod

3:00PM - 4:00PM EXPO HALL: Learning Lab

3:30PM - 5:00PM Friday Educational Sessions 3

5:00PM - 6:30PM Poster Gallery Reception

6:30PM - 8:00PM Medical Student Quiz Bowl

7:30PM - 9:00PM Residents & Fellows Networking Night

## SATURDAY, FEBRUARY 21

7:00AM - 11:00AM Registration Open

7:30AM - 9:15AM AAP Member Caucus & Awards Breakfast

**AAP PRO TIP:**  
This is your chance to meet and hear from the AAP Board of Trustees.

9:15AM - 10:00AM RMSTP New Knowledge Plenary

10:15AM - 11:15AM Saturday Educational Sessions 1

11:15AM - 12:00PM EXPO HALL: Snacks and Fairwell to Exhibitors

12:15PM - 1:15AM Saturday Educational Sessions 2

1:30PM - 2:30PM Saturday Educational Sessions 3

**AAP PRO TIP:**  
Presentations, times and schedules are subject to change. Visit the [Physiatry '26 event app](#) or [physiatry.org/AnnualMeeting](#) for the most up-to-date information.

💰 Paid/ticketed event

## Thank You to our Program Committee

Physiatry '26 wouldn't be possible without the tireless efforts of this AAP team.

### AAP PROGRAM COMMITTEE:

Shanti Pinto, MD - Chair

Surendra Barshikar, MD

Deborah Bergfeld, MD

Natasha Bhatia, MD

Dana Branch, MD

Scott Campea, MD

Kathy Chou, DO

Terence Hillery, MD

Cherry Junn, MD

James Meiling, DO

Michael Nguyen, MD

Nathan Rudin, MD

Andrew Sherman, MD

Juliet Zakel, MD

Nadia Zaman, DO

Ella D'Amico, MD - *ARRC Rep*

David Mack, PhD - *ARRC Rep*

Mustafa Dodurgali, MD -  
*Resident & Fellow Council Rep*

Grace Olson -  
*Medical Student Council Rep*





AAP 2026

# THE IPSEN LEARNING LAB

Join us on the congress floor  
Thursday, February 19, and Friday, February 20,  
for engaging workshops led by expert faculty.



## ANATOMY AND CADAVER LAB FOR ADULT UPPER LIMB SPASTICITY

Dr Shivani Gupta, Dr Michael Saulino,  
and Dr Madeleine Norris

**Thursday, 10:30 AM - 11:30 AM**

Delve into upper limb anatomy and hone your clinical skills with cadaver-based injection training. Inject a cadaver with colored dye and see if you hit your mark. This is a hands-on learning experience with a dash of friendly competition – don't miss this workshop, or your muscle! Results will be displayed at the Ipsen booth.



## ANATOMY AND CADAVER LAB FOR ADULT LOWER LIMB SPASTICITY

Dr Shivani Gupta, Dr Michael Saulino,  
and Dr Madeleine Norris

**Thursday, 3:00 PM - 4:00 PM**

Delve into lower limb anatomy and hone your clinical skills with cadaver-based injection training. Inject a cadaver with colored dye and see if you hit your mark. This is a hands-on learning experience with a dash of friendly competition – don't miss this workshop, or your muscle! Results will be displayed at the Ipsen booth.



## HANDS-ON ULTRASOUND AND CADAVER INJECTION LAB

Dr Monica Verduzco-Gutierrez,  
Dr Madeleine Norris, and Dr Michael Saulino

**Friday, 12:30 PM - 2:00 PM**

Learn the basics or refine your technique in this expert-led work session with practical, hands-on ultrasound instruction and an opportunity to practice injections on cadaver limbs. This interactive session aims to enhance clinical proficiencies and improve patient care.



## ADULT SPASTICITY DIAGNOSIS AND INJECTION TREATMENT PLANNING WITH B.E.G.I.N.

Dr Monica Verduzco-Gutierrez and Dr Shivani Gupta

**Friday, 3:00 PM - 4:00 PM**

Learn practical tips of diagnosis, management, and treatment for spasticity along with discussions on relevant anatomy and injection considerations. This session is designed to boost participants' confidence in managing spasticity effectively and choosing optimal treatment strategies. A Cervical Dystonia B.E.G.I.N. book is also available!

**Join us for coffee at booth #601!**

- Presentations are promotional programs provided by Ipsen Biopharmaceuticals, Inc.
- Presenters are speaking on behalf of Ipsen and are being compensated for their time
- Presentations are not continuing medical education (CME) programs

# Plenary Speakers

These thought leaders are bringing their big ideas that will influence your research, education, practice and career.



DeLisa Lecture

Thursday, February 19 | 9:30AM - 10:30AM

**PROF. FRIEDHELM HUMMEL, MD**

Professor, Defitech Chair, and Head of Hummel Laboratory,  
École Polytechnique Fédérale de Lausanne (EPFL), Switzerland  
Associate Professor, Clinical Neuroscience, University of  
Geneva Medical School (HUG), Switzerland

## Innovative Neurotechnology Approaches for Advancing Neurorehabilitation

**Description:** Recovery after brain lesions or neurodegeneration remains a major challenge, as many patients continue to experience persistent deficits and limited access to personalized therapies. In this lecture, Prof. Hummel will explore how innovative neurotechnologies—such as non-invasive brain stimulation and brain-computer interfaces—are opening new avenues to enhance and individualize rehabilitation.

Attendees will learn about current advances in these technologies, see methods that bring us closer to patient-tailored interventions, and hear a summary of the latest scientific and clinical evidence. The lecture will conclude with a forward-looking perspective on how these innovations can be further developed, validated, and implemented to transform the future of neurorehabilitation.

Prof. Friedhelm Hummel, MD, is a full professor at the École Polytechnique Fédérale de Lausanne (EPFL), holding the Defitech Chair of Clinical Neuroengineering, and an associate professor of clinical neuroscience at the University of Geneva. He leads the Hummel Laboratory at EPFL's School of Life Sciences, focusing on neurorehabilitation and innovative neurotechnologies.

Friday, February 20 | 9:30AM - 10:45AM

**CATHERINE SANDERSON, PhD**

POLER Family Professor of Psychology, Amherst College

## The Psychology of Courage and Inaction: Strategies for Fostering an Ethical Bystander

**Description:** We are bombarded daily by news reports of bad behavior, from sexual harassment in the workplace to racist attacks on public transportation to bullying in schools. Using empirical research from psychology and neuroscience, Dr. Sanderson will examine the very normal psychological factors that lead most of us to stay silent in the face of problematic behavior and how this tendency unfortunately allows such acts to continue. As Martin Luther King Jr. said, "History will have to record that the greatest tragedy of this period of social transition was not the strident clamor of the bad people, but the appalling silence of the good people." Finally, this talk will describe practical strategies individuals and organizations can use to overcome silence and inaction and instead foster an ethical bystander culture.

*This plenary will end with a thoughtful Q&A on advocacy and moderating led by AAP President Christopher Visco, MD.*

Catherine Sanderson is the POLER Family Professor of Psychology at Amherst College, author, and expert on happiness, mindset, and the psychology of courage and inaction. She speaks widely for public and corporate audiences and has been featured in CNN, NPR, The Washington Post, and The Atlantic.





# NO ROOM FOR ERROR

The updated Lioresal® Intrathecal (baclofen injection) refill kit with the first and only 100% sterile presentation on the market<sup>1</sup>



## The redesigned Lioresal® refill kit is built for efficiency, with:



- a presentation that follows the flow of clinical process to ensure consistency and predictability from refill to refill



- more than a dozen enhancements based on feedback from healthcare professionals like you\* including a Quick Reference Guide, additional sterile drape, and a new sharps holder

\*Based on feedback from healthcare professionals who manage IT baclofen pumps.

## Important Safety Information for ITB Therapy with Lioresal® Intrathecal (baclofen injection)

**Indications and Usage**  
Lioresal® Intrathecal (baclofen injection) is a muscle relaxant and antispastic that is indicated for use in the management of severe spasticity of cerebral or spinal origin. Lioresal® Intrathecal is intended for use by the intrathecal route in single bolus test doses (via spinal catheter or lumbar puncture) and, for chronic use, only in implantable pumps approved by the FDA specifically for the administration of Lioresal® Intrathecal into the intrathecal space. Lioresal® Intrathecal via an implantable pump should be reserved for patients unresponsive to oral baclofen therapy or those who experience intolerable CNS side effects at effective doses. Patients with spasticity due to traumatic brain injury should wait at least one year after the injury before consideration of long term intrathecal baclofen therapy. Prior to implantation of a device for chronic intrathecal infusion of Lioresal® Intrathecal, patients must show a response to Lioresal® Intrathecal in a screening trial. Please review the dosing and administration section of the Lioresal® Intrathecal prescribing information for further details.

**Abrupt discontinuation of intrathecal baclofen**, regardless of the cause, has resulted in sequelae that include high fever, altered mental status, exaggerated rebound spasticity, and muscle rigidity, that in rare cases has advanced to rhabdomyolysis, multiple organ-system failure and death. Prevention of abrupt discontinuation of intrathecal baclofen requires careful attention to programming and monitoring of the infusion system, refill scheduling and procedures, and pump alarms. Patients and caregivers should be advised of the importance of keeping scheduled refill visits and should be educated on the early symptoms of baclofen withdrawal. Special attention should be given to patients at apparent risk (e.g., spinal cord injuries at T-6 or above, communication difficulties, history of withdrawal symptoms from oral or intrathecal baclofen). Consult the technical manual of the implantable infusion system for additional postimplant clinician and patient information.

Please visit [www.LIORESAL.com](http://www.LIORESAL.com) for full prescribing Information.

References: 1. Saol Therapeutics Inc. Data on file: NDA 020075 Lioresal; 3.2.P.8 Stability and 3.2.P.8.2 Post-Approval Stability Protocol and Stability Commitment.



Lioresal is a registered trademark of Amneal Pharmaceuticals LLC.  
©2024 Amneal Pharmaceuticals LLC. All Rights Reserved.  
PP-CVA-LIORE-US-0004



# Pre-Conference Workshops & Sessions

**ADDITIONAL FEES APPLY**  
Add any workshop to your conference registration to reserve your spot.

THERE'S STILL TIME TO ADD ONE OF THESE IN-DEPTH SESSIONS TO YOUR REGISTRATION!

Master these important skills and get bonus networking time with your peers in an intimate setting. Stop by the registration desk to learn more. All pre-conference workshops will be held Tuesday and Wednesday, February 17 and 18.

### \$ Residency & Fellowship Program Directors (RFPD) and Program Coordinators Workshop – Two Day Event

TUESDAY, FEBRUARY 17  
1:00PM - 5:00PM

WEDNESDAY, FEBRUARY 18  
8:00AM - 12:00PM

PRICE: \$250 for AAP members/ \$450 for non-members  
A staple at the AAP Annual Meeting, this workshop unites program directors and coordinators across the country. Join us to learn and grow your programs with the best and novel practices.

#### DAY 1

1:00PM - 5:00PM

Get key updates from ACGME and ABPMR, hear insights from our Recruitment Subcouncil, and stick around for our signature networking event.

5:00PM - 6:30PM

RFPD Networking Event

#### DAY 2

7:15AM - 8:00AM

Hot Breakfast

8:00AM - 12:00PM

Hot Topics in GME Leadership - interactive panels on Training Residents & Fellows with Disabilities and Experiences with Unionization..

12:00PM - 1:00PM

Roundtable Lunch

### Resident, Fellow & Medical Student Bootcamp

WEDNESDAY, FEBRUARY 18  
8:00AM - 12:00PM

PRICE: Free with your resident, fellow, or medical student registration

Get hands-on experience with core physiatric procedures in rotating stations led by expert PM&R faculty. We'll cover ultrasonography, electromyography, spasticity management, and more, and you'll leave with practical skills to strengthen your training and career. This popular workshop sells out fast, so reserve your spot when you register!



### \$ Become a ROCKSTAR Program Director or Coordinator

WEDNESDAY, FEBRUARY 18  
1:00PM - 5:00PM

PRICE: \$49 for AAP members/ \$99 for non-members

The best job in medicine—Program Director or Coordinator! You've taken on the role, but where do you go when you're not sure what comes next? With a little help from your peers, this pre-course will walk you through the Who, What, How, and When of leading residents or fellows—and set you on the path to becoming a true ROCKSTAR. Designed for new Program Directors and Coordinators (0-3 years of experience), this session takes place in the afternoon following the RFPD session.

### \$ Leadership and Operational Skills for Inpatient Physiatrists & Medical Directors

WEDNESDAY, FEBRUARY 18  
8:00AM - 12:00PM

PRICE: \$49 for AAP members/ \$99 for non-members

This interactive bootcamp gives physiatrists the essential skills for inpatient attending and medical director roles. Through small-group activities, large-group debriefs, and real-world case scenarios, you'll master peer-to-peer review, JCAHO/CARF prep, leading team conferences, and managing difficult conversations with patients and families. Leave with practical takeaways and a resource toolkit—ready to tackle administrative, leadership, and communication challenges in inpatient rehab with confidence.





# SPASTICITY

## MOMENTUM LAB

**SPASTICITY X: MOMENTUM LAB** is a dynamic 1.5-day international forum bringing together clinicians, researchers, educators, and industry leaders to advance the science and care of spasticity. Building on the energy of the inaugural 2024 meeting, we're here to challenge ideas, share emerging research, and spark meaningful progress.

Over the next two days, we'll explore:

- The current and future landscape of spasticity management
- Advances in education and training
- Innovative and sometimes provocative approaches in treatment and research

This meeting is designed to sharpen our thinking, strengthen collaboration, and inspire practical improvements that elevate care worldwide.

With experts joining us from more than a dozen countries, Spasticity X is truly global. Your curiosity, experience, and ideas are what drive this momentum.

Thank you for being part of this effort to push boundaries and reimagine what's possible in spasticity care.

Gerard Francisco, MD, *Chair, Spasticity X Steering Committee*



### DAY 1 - 8:45AM - 6:30PM

#### OPENING SESSION

- Bagels, Bacon, & Brainstorm (invitation only) – An Industry, Academia, Clinical Practice Collaborative Exchange
- Welcome Remarks
- New Proposed Spasticity Definition
- Do We Need to Define Spasticity at All?
- Spasticity Syndrome

#### GAIT SESSION

- Spasticity & Motor Synergy in Post-Stroke Stiff-Knee Gait
- Instrumented Assessment of Spastic Gait
- Visual Inspection of Spastic Gait

#### Lunch Symposium

#### NEUROMODULATION

- High-frequency Electrical Motor Block
- Adaptive Patterned Electrical Stimulation (SHAPES) for Post-Stroke Arm Spasticity

#### PEDIATRICS, BIOLOGY & THERAPEUTICS

- Future of Pediatric Spasticity Management
- Metabolomic/Proteomic Impacts of BoNT-A in Children with CP
- Genetics of Spasticity
- OnabotulinumtoxinA Safety & Efficacy for Pediatric

#### SPASTICITY: LONG-TERM TRIALS

Evening Welcome Reception

### DAY 2 - 7:00AM - 12:00PM

#### Breakfast Symposium

#### ARTIFICIAL INTELLIGENCE IN SPASTICITY

- AI for Spasticity Assessment
- Additional AI talks on:
  - Fuzzy Logic for Diagnosis
  - Machine Learning Interpretation Studies
  - NLP/ML Multicenter BONT-A Utilization Study

#### MODALITIES & TREATMENT STRATEGIES

- Dry Needling
- Hydrodissection of Fascia
- Diffusion Profiles Among BoNT-A Formulations
- Factors Influencing Choice of Toxin
- Early Spasticity Treatment & Motor Recovery (Baclofex Trial Protocol)

#### ADDITIONAL AFTERNOON WORKSHOPS

##### 1:00PM - 5:00PM

- MUSICA Workshop (By Invitation Only)

*\* Flexible Registration: Rates are based on career level. The Spasticity X Lab can be purchased as a standalone workshop or added to your Physiatry '26 registration at a discounted price.*

*\* Special Bundle for Pediatric Physiatrists: Register for both Tuesday's Spasticity X Lab and Wednesday's Pediatric Workshop together and save.*

# Pediatric Rehabilitation Symposium



We're thrilled to announce the Inaugural Pediatric Rehabilitation Medicine Day at AAP!

This event offers a deep dive into the latest topics in pediatric rehabilitation, with opportunities for active discussion and audience engagement. Whether you're a student or resident exploring this field, a clinician seeking to expand your skills in caring for children with rehabilitation needs, an experienced pediatric rehabilitation specialist, or a researcher interested in connecting clinical insights to your work, you'll find rich opportunities for learning, collaboration, and networking.

### MORNING SESSION - 9:00AM - 12:00PM

#### THEME: CLINICAL INNOVATION & TECHNOLOGY IN PEDIATRIC REHABILITATION MEDICINE (PRM)

##### 9:00 - 9:45AM

Beyond the Consult: Integrating PRM into Hospital Systems & Unconventional Approaches to Improving Exposure and Access to PRM

##### 9:45 - 10:15AM

Teaching and Interpreting Gait Analysis: National Perspectives from PRM Fellowships

##### 10:15 - 10:45AM

Bridging Technology and Care: Marker-Based vs. Markerless 3D Gait Analysis in Puerto Rican Pediatric Populations

##### 10:45 - 11:15AM

Navigating Care Transitions in Pediatric Disorders of Consciousness

##### 11:15 - 12:00PM

From Hospital to Home: Navigating Rehabilitation in Pediatric Cardiac Patients

### AFTERNOON SESSION - 1:00PM - 4:00PM

#### THEME: CUTTING EDGE INNOVATIONS IN TRAINING, THERAPIES, AND ADVOCACY

##### 1:00 - 2:00PM

Innovation in PRM Training Pathways: Updates on Models for Workforce Development

##### 2:00 - 2:30PM

The Missing Milestone in PM&R: Advocacy

##### 2:30 - 2:45PM

Traffic Violence and Pediatric Brain Injury: How Physiatrists Can Lead in Advocacy and Prevention

##### 2:45 - 3:30PM

Band-Aids Don't Fix Bullet Holes: Pediatric Firearm Injury and Mortality Prevention

##### 3:30 - 3:45PM

Stellate Ganglion Blocks for Long COVID Management in a Pediatric Patient

##### 3:45 - 4:00PM

Wrap-Up / Q&A / Closing Remarks



RESTORING QUALITY TO LIFE

Consistently Recognized for Excellence  
#1 in the Southeast

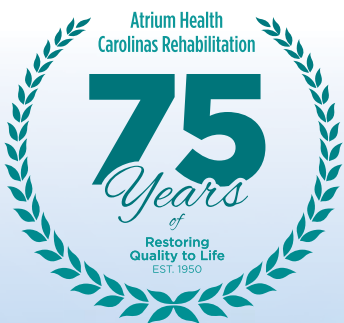
Largest PM&R Academic  
Faculty in the Southeast

Strong Academic Partnership  
with Wake Forest University  
School of Medicine

Pioneering Innovation with  
State-Of-The-Art Technology

At the Forefront with 13  
CARF-accredited Programs

Internationally Recognized Global Leader  
Consulted Worldwide for Expertise and Excellence



[AtriumHealth.org/CarolinasRehabilitation](https://AtriumHealth.org/CarolinasRehabilitation)  
Inpatient Referrals: 877-734-2251

# Program Coordinators Workshop & Sessions



As always, our Coordinators Council has created a schedule filled with hot topics to help navigate this new era of residency management.

DAY 1 - TUESDAY, FEBRUARY 17

LOCATION: BALLROOM B, 3RD FLOOR

1:00-5:00PM RFPD and Coordinators Workshop, Part 1

DAY 2 - WEDNESDAY, FEBRUARY 18

LOCATION: BALLROOM B, 3RD FLOOR

8:00AM-12:00PM RFPD and Coordinators Workshop, Part 2

5:30PM-7:30PM Career Fair

DAY 3 - THURSDAY, FEBRUARY 19

LOCATION: 102 ABC

7:30AM Fueling Up for the Day Ahead  
(breakfast provided)

8:00AM Welcome Day 1  
AAP Coordinator Council

8:15AM Mentorship Blitz  
Maria Hamud, MHA, C-TAGME

9:15AM BREAK

9:30AM Beyond the Buzz: Realistic Ways  
Coordinators Can Use AI Right Now  
Aurea Baez-Martinez, MSML, C-TAGME

10:15AM Group Photos

10:35AM Coordinators 2nd Annual Quiz Bowl  
Terri Isbell, C-TAGME, Valeria Rodela, &  
Coretha Davis, BS, C-TAGME

11:50AM Lunch (On Your Own)

1:00PM Updates for Coordinators from ABPMR  
Rema David & Stephen Huesing

1:20PM Mastering Fellowships  
Megan Gentile

2:00PM Program Director Panel

3:00PM BREAK

3:15PM Updates from ACGME Review Committee of  
Physical Medicine & Rehabilitation  
Caroline Fischer, MBA

4:15PM Questions & Wrap Up  
AAP Coordinator Council

5:00-6:30PM Poster Gallery Receptions

6:30-8:00PM President's Welcome Reception

DAY 4 - FRIDAY, FEBRUARY 20

LOCATION: 102 ABC

7:30AM Fueling Up for the Day Ahead

8:00AM Welcome Day 2  
AAP Coordinator Council

8:15AM Thalamus for PM&R Programs  
Brooke Moore, MBA, PMP, C-TAGME

9:15AM BREAK

9:30AM Plenary Session: The Psychology of Courage  
and Inaction: Strategies for Fostering an  
Ethical Bystander

10:15AM BREAK

10:35AM Updates from U.S. Psychiatry  
Monica Johnson, MBA

10:50AM From Coordinator to Changemaker:  
Inspiring Leadership in PM&R  
Aurea Baez-Martinez, MSML, C-TAGME

11:50AM Lunch (On Your Own)

1:00PM Owning the Site Visit: Understanding the  
Process and Leading with Confidence  
Maria Hamud, MHA, C-TAGME

2:00PM Associate Program Director Roles &  
Responsibilities  
Nick Elwert, DO

3:00PM BREAK

3:15PM Coordinating for Impact: Advancing  
Resident Wellness in PM&R

4:15PM Questions & Wrap Up  
AAP Coordinator Council

5:00-6:30PM Poster Gallery Receptions



# DELIVERING EXCELLENCE IN REHABILITATION MEDICINE.

At Burke Rehabilitation®, our whole-person approach combined with innovative treatment, pioneering clinical research and inspiring education allows us to provide life-changing care to those who need it most.



**INNOVATION &  
TECHNOLOGY**  
CLINICAL SITE



**IN GME PROGRAM**  
OVER LAST 6 YEARS



**FIRST AND ONLY**  
FREE-STANDING  
REHABILITATION HOSPITAL  
IN NEW YORK WITH  
ON-SITE DIALYSIS



**BURKE**  
REHABILITATION  
MONTEFIORE HEALTH SYSTEM



785 MAMARONECK AVENUE | WHITE PLAINS, NY 10605 | 888-99-BURKE | BURKE.ORG

## Curate Your Physiatry '26 Experience

Our annual meeting brings powerhouse speakers and cutting-edge presentations on clinical care, administration, and more. Look out for these icons to quickly spot topics that match your interests.



### NEW Theme: Neuromodulation

Dive into the future of rehabilitation with our spotlight on neuromodulation! Explore groundbreaking research, innovative techniques, and real-world applications helping to improve patient function through nerve stimulation. Keep an eye out for these special sessions throughout the program.



### Academic

Discover the best practices and latest trends in educational curricula, career development and more.



### Research

Discover the best practices and latest trends in PM&R research, funding, and more.



### Clinical

Take real-world scenarios to practice with our clinical track, bringing you the sought-after topics in patient care.



### In-Training

Trainees and rising stars, learn critical career development skills from your peers and leaders in the specialty.



### Administration

Find insights on building ongoing success for your program, department, institution, and the future of the specialty worldwide.



### International

These sessions dive into education, research and leadership opportunities in academic physiatry on a global level.

### BUILD YOUR PERSONALIZED AGENDA

View the latest updates, browse sessions and speakers, and more at [physiatry.org/annualmeeting](https://physiatry.org/annualmeeting).

Earn up to 25 AMA PRA  
Category 1 Credits™!



Don't forget to bring your badge! You'll need to have it on you for all AAP events.

HOT BREAKFAST SYMPOSIUM

7:00AM - 8:00AM  
Location: 102 A-C

EDUCATIONAL SESSIONS 1

8:15AM - 9:15AM



Clinical Compensation Principles in Academic Medicine

Location: 103 AB

Anna Rogers, MHA, Aaron Olsen, MBA

This presentation will cover various elements of faculty and APC compensation with perspectives from multiple institutions. Subtopics include gap analysis, clinical FTE definitions, and paying for administrative, research, and academic time. \*Limited to ADC and Chairs Only.



Expect the Unexpected: Important Anatomic Variants for Spasticity Interventionalists

Location: 209 ABC

Michael Saulino, MD, Daniel Moon, MD, Kimberly Heckert, MD

Strengthen your approach to spasticity management by diving into the anatomical variations that shape interventional success. You'll explore key differences in the upper and lower extremities and spine that affect the safety and effectiveness of nerve blocks, chemodenervation, and intrathecal therapies. With insights into both common and rare deviations, you'll be better equipped to plan procedures, prevent complications, and elevate patient outcomes.



Exploring Neurorehabilitation Fellowships: TBI, Pediatrics, SCI, and Neuromuscular Pathways

Location: 202 A

Shane Stone, MD, Michael Nguyen, MD, James Meiling, DO, Ana Ortiz-Santiago, MD

This session will feature a panel of fellowship-trained physiatrists representing Traumatic Brain Injury (TBI), Pediatrics, Spinal Cord Injury (SCI), and Neuromuscular Medicine. Each panelist will share insights about their fellowship experiences, with a focus on similarities and differences in training, procedural exposure, and career opportunities post-fellowship.



Interventional Spine and Pain Management: Starting and Advancing in your Career as a Physiatrist

Location: 208 ABC

Jayesh Vallabh, MD, Maria Grabnar, MD, Terence Hillery, MD, Ameet Nagpal, MD

The first year in practice is tough and sustaining clinical and academic growth poses ongoing challenges for academic physiatrists. Outpatient physiatrists also face unique hurdles in building and maintaining a strong practice—often unfamiliar to residents, fellows, and early-career faculty. This session tackles the key headwinds Academic Interventional Spine Physiatrists encounter and offers long-term strategies for growth.



NextGen Approaches to Multidisciplinary Translational Medicine in PM&R

Location: 201 AB

W. David Arnold, MD, Ryan Castoro, DO, Julieth Andrea Sierra Delgado, MD, Kristina Kelly, PT

Translational medicine turns scientific discoveries into real-world care, and it demands true multidisciplinary teamwork. This session brings together experts to share strategies for advancing translational research in PM&R, using case studies in Charcot-Marie-Tooth disease, Myotonic Dystrophy, and Autism Spectrum Disorders. Attendees will learn about building effective teams, navigating regulations, and integrating functional outcomes. A panel discussion will tackle key challenges and future directions, offering a clear roadmap for patient-centered translational work in PM&R.



Rehabilitation Oncology 101

Location: 203

Adrian Cristian, MD, Ishan Roy, MD, PHD, Eric Wisotzky, MD, Jessica Engle, DO

As cancer survival rises, so does the need to address the functional impacts of cancer and its treatments. Physiatrists play a crucial role in improving quality of life by identifying and treating cancer-related physical impairments. This course offers a practical introduction to cancer rehabilitation, covering common impairments and key tools—including musculoskeletal ultrasound and other essential technologies.



Washington Update Year-In-Review: What You Need to Know: Past, Present, and Future

Location: 202 BC

Greg Worsowicz, MD, Clinton Faulk, MD, Chris Rorick, MPA, Chloe Slocum, MD

Is it GME (funding or positions), research (direct or indirect funding), advocacy (how and where), or another HOT issue facing our field? Join this panel of experts for a year-in-review of Washington and legislative updates on the issues that have and will impact the field of Physical Medicine and Rehabilitation. Learn about what has happened, what is about to happen, and future legislative/ regulatory items that academic physiatrists need to understand.



PLENARY SESSION:  
DeLisa Lecture: Innovative  
Neurotechnology Approaches for  
Advancing Neurorehabilitation

9:30AM - 10:30AM

Location: Ballroom A, 3rd Floor

Friedhelm Hummel, MD

Recovery after brain lesions or neurodegeneration remains a major challenge, but emerging neurotechnologies—non-invasive brain stimulation, brain-computer interfaces, and integrated approaches—are opening the door to more personalized rehab. Prof. Hummel will spotlight key advances, methods moving us closer to tailored interventions, and the latest scientific and clinical evidence, closing with a forward-looking take on what these innovations need to truly transform neurorehabilitation.

REFRESHMENTS & LEARNING LAB/ DEMO PODS

10:30am - 11:15am

Location: Expo Hall

EDUCATIONAL SESSIONS 2

11:15AM-12:15PM



Are Amputee Centers of Excellence Achievable?  
Universal Challenges and Successful Strategies

Location: 202 BC

David Crandell, MD, Ana Cintron, MD, Joanne Gonzalez, MD, Prateek Grover, MD, PhD, Danielle Melton, MD

Working with patients with upper and lower limb loss creates unique rehabilitation challenges during pre-operative, post-operative, pre-prosthetic and prosthetic phases of care. Discover how civilian and veteran models of an interdisciplinary center for individuals with limb loss are developing at 5 academic physiatry programs.



Integrating Palliative Care into Pediatric Rehabilitation  
Medicine: Pathways, Benefits, and Practice Strategies

Location: 202 A

Marina Ma, MD, Erika Erlandson, MD, Thomas McNalley, MD

Take a deep dive into how palliative care enriches Pediatric Rehabilitation Medicine for children with life-limiting or life-altering conditions. Dual-trained physicians share how combined PRM and Hospice & Palliative Medicine training informs their practice, while attendees gain insight into the benefits of early palliative involvement, pathways to HPM training, and practical ways to apply HPM principles in PRM. An interactive Q&A closes with real-world discussion and guidance.



Optimizing Real-World Neuromodulation Outcomes for Chronic Pain: A Multidisciplinary Perspective

Location: 208 ABC

Christine Hunt, DO, David Provenzano, MD, Alexios Carayannopoulos, DO

This session will include an overview of neuromodulation for the treatment of chronic pain with a focus on optimizing long-term outcomes, including recommended rehabilitation strategies to optimize outcomes, patient selection and follow-up, and discussion of the best tools to capture and measure response to therapy.



Research Administration in an Evolving Research Landscape

Location: 103 AB

Yelena Sionova, MBA, Megan Morris, PhD

This session offers an interactive discussion on the latest NIH landscape and its potential impact on research mission and infrastructure.



Supporting Current and Future Disorders of Consciousness Programs with State-of-the-Art Resources and Accreditation

Location: 209 ABC

Terrence Carolan, MSPT, Neil Jasey, MD, Sangeeta Driver, MD, Caroline Schnakers, PhD

Advances in critical care have increased the number of individuals with Disorders of Consciousness (DoC), yet access to skilled care remains limited. Recent evidence and new CARF standards provide guidance for transdisciplinary DoC rehabilitation programs. An expert panel will explore practical applications of these standards, incorporating input from individuals with DoC and their families, highlighting resources essential for delivering state-of-the-art care as demand continues to grow.



The Power of Yes, the Wisdom of No: Seizing Opportunity in Academic Medicine Without Losing Yourself

Location: 203

Aaron Yang, MD, Prakash Jayabalan, MD, PhD, Eric Wisotzky, MD, Sandra Hearn, MD, Erika Trovato, DO, Victoria Whitehair, MD, Monica Verduzco-Gutierrez, MD, Kristin Wong, MD, Kirk Lercher, MD

Designed for early- and mid-career medical professionals, the session explores navigating academic growth while protecting personal well-being. Centered on the theme of opportunity, it examines when to say yes to leadership and growth—and when to say no to safeguard focus, family, and self. Nine accomplished panelists share career highlights and lead small-group discussions, giving participants practical tools, decision-making frameworks, and clarity on aligning goals with values while sustaining professional momentum and personal balance.





Trans-Disciplinary Phenotyping for Low Back Pain

Location: 201 AB

Nam Vo, PhD, Gina McKernan, PhD, Carol Greco, PhD, Michael Schneider, DC, PhD

An unprecedented dataset from 1,000 participants in the NIH HEAL initiative captures characteristic features of chronic low back pain (cLBP). Assessments include known contributors and broad, unbiased data to uncover novel factors shaping the cLBP experience. Led by domain experts, these measurements advance understanding of cLBP and enable integrated biological, biomechanical, and behavioral profiling, paving the way for novel phenotyping and personalized treatment strategies.



Ultrasound-Guided Procedures in Hand and Wrist

Location: Ballroom B, 3rd Floor

Seyed Ali Mostoufi, MD, Amit Bhargava, MD, Timothy Tiu, MD

Carpal tunnel, trigger finger, and De Quervain tenosynovitis are common in PM&R MSK and hand clinics. While most physiatrists are familiar with diagnosis, medical management, rehabilitation, and bracing, ultrasound-guided injections and minimally invasive treatments have grown in use. This session offers hands-on education in procedures including trigger finger and carpal tunnel release, hydrodissection, and biologic treatments for tenosynovitis. Attendees will gain both didactic instruction and practical experience in scanning, identifying target structures, and performing procedural techniques.

LUNCH & LEARN

12:30pm - 1:30pm

Location: Ballroom A, 3rd Floor

EDUCATIONAL SESSIONS 3  
2:00M - 3:00PM



How Do We Begin? An Intro to Training for Acute Neurologic Consult Services

Location: 209 ABC

Arline Edmond, MD, Vera Staley, MD, Jing Lin, MD, Jasmine Ng, MD

Curated for clinicians working in acute care consult services, this session focuses on common issues across neurologic diagnoses. Even fellowship-trained providers in brain or spinal cord injury medicine may not leave training with all the tools needed for a successful consult service. Attendees will gain practical knowledge and strategies that can be directly applied to improve consult care.



Innovative Neurotechnologies to Enhance Recovery from Brain Disorders

Location: Ballroom B, 3rd Floor

Friedhelm Hummel, MD, Giacomo Koch, MD, PhD

Advances in neurotechnology are creating new possibilities for recovery after brain disorders such as stroke, TBI, and neurodegenerative diseases. This symposium gathers experts to showcase innovations in brain

stimulation, neural interfaces, neuroprosthetics, and neuropharmacology, highlighting their role in translational neurorehabilitation. Speakers will provide an overview of how these technologies are driving more effective, personalized, and clinically impactful interventions.



Navigating the Spectrum of Pediatric Chronic Pain: Interactive Case Based Learning

Location: 201 AB

Sabrina Dieffenbach, MD, Katherine Bentley, MD, Ziva Petrin, MD, Nova Hou, MD

A dynamic, case-based lecture on adolescent and young adult chronic pain, blending academic insights with real-world application. Through thought-provoking scenarios, attendees will gain practical tools to enhance treatment, empower patients, and build confidence in caring for this population.



Orthobiologics in Regenerative Rehabilitation: Transforming Healing and Recovery

Location: 208 ABC

Curated by ARRC



Joanne Borg Stein, MD

This session will examine the role of orthobiologics in regenerative rehabilitation. Experts will discuss how these approaches accelerate healing, enhance recovery, and offer new possibilities for treating musculoskeletal injuries. A discussion of challenges and obstacles in the field will also be facilitated by the session moderator.



Psychology Administration

Location: 103 AB

Nahir Henry, MHA, PT, Anna Rogers, MHA

This session features a panel covering psychology/neuropsychology administration and intersection with PM&R with perspectives from multiple institutions. Subtopics include employment and faculty/staff designation, compensation plan design, productivity and benchmarking, research, education and training, and recruitment. \*Limited to ADC and Chairs Only.



Return to Sport After Injury: A Case-Based Discussion on the Return to Sport Continuum

Location: 202 BC

Gerardo Miranda-Comas, MD, William Micheo, MD, Walter Frontera, MD, PhD, Martin Roldan, MD

Return-to-sport (RTS) decisions are complex and multifactorial. This interactive, case-based session explores the RTS continuum, including biological healing, functional testing, and psychological readiness. Experts present real-world cases—bone stress injuries, ACL tears, hamstring strains, and concussions—offering practical insights. Attendees will engage in evidence-based discussions to refine decision-making and enhance strategies for safer, more effective return-to-play outcomes.



Spinal Stenosis: New Treatments for an Old Diagnosis: Is It Time to Incorporate New Innovations into Your Practice?

Location: 203

Seyed Ali Mostoufi, MD, Amit Bhargava, MD, Andrew Sherman, MD, Zacharia Isaac, MD

Spinal stenosis with neurogenic claudication significantly limits walking and standing in older adults, often leading to surgery if nonoperative treatments fail. This session reviews evidence supporting the minimally invasive, x-ray-guided lumbar decompression (MILD procedure), performed under sedation in an outpatient setting. Its tolerability in frail patients with complex conditions makes it an appealing option, bridging the treatment gap between epidural injections and laminectomy.



Teaching on the Go: Building Effective Bedside Teaching Toolkits

Location: 202 A

Alethea Appavu, DO, Kristen Harris, MD, Amanda Harrington, MD, Aaron Yang, MD, Dana Branch, MD, Faheem Mahomed, MD, Michael Nguyen, MD

New attending physicians or junior faculty often face the challenge of balancing patient care with teaching medical students, residents, and fellows. This session reviews core principles of adult learning and offers strategies to integrate trainee education into clinical practice. Attendees will gain guidance for creating a personalized “toolkit” of teaching materials tailored to trainee experience, reducing the need to develop new content each rotation.

REFRESHMENTS & LEARNING LAB/ DEMO PODS

3:00pm - 3:45pm

Location: Expo Hall

EDUCATIONAL SESSIONS 4  
3:30PM - 5:00PM



Revenue Cycle Practice Relations

Location: 103 AB

Aaron Olsen, MBA, Thomas Petruska, MBA, Lori McKenna

Learn new billing and coding updates from expert PM&R department administration leaders.



Emerging Technologies in Regenerative Rehabilitation

Location: 202 BC

Curated by ARRC



Fabrisia Ambrosio, PhD, Michael Boninger, MD, Colin Franz, MD, PhD

This session will explore cutting-edge technologies shaping the future of regenerative rehabilitation. Experts will discuss how these innovations are enhancing recovery, improving patient outcomes, and transforming rehabilitation practices.



Empower Movement: Prosthetics Bootcamp for Practitioners

Location: 208 ABC

Haris Choudry, MD, Malav Shah, MD, Gregroy De Gruchy, MD, Kavita Nadendla, MD, Sharon David, MD, Alethea Appavu, DO, Marlis Gonzalez-Fernandez, MD

This workshop equips physiatrists at all training levels with knowledge and skills in limb loss rehabilitation. Participants will learn to evaluate and address common prosthetic issues, select components, document and write prescriptions, assess prosthetic gait, collaborate with prosthetists, understand rehabilitation timelines, and advocate for compassionate, patient-centered care.



From Idea to Impact: Navigating the Research Process in PM&R

Location: 202 A

Farha Ikramuddin, MD, W. David Arnold, MD, Kristin Zhao, PhD, Nathan Hogaboom, PhD

High-quality research is essential for advancing PM&R and building academic careers, yet early-career professionals often face challenges navigating research pathways. This session provides practical tools, strategies, and mentorship insights for designing, conducting, and disseminating impactful research. Through didactics, real-world examples, and interactive Q&A, attendees will gain a clear roadmap for academic success in PM&R research.



Paradoxical Response to Exercise in Postural Orthostatic Tachycardia Syndrome (POTS) and Myalgic Encephalitis/Chronic Fatigue Syndrome (ME/CFS)

Location: 201 AB

Tae Hwan Chung, MD, Christina Kokorelis, MD, Alba Azola, MD

Exercise for Postural Orthostatic Tachycardia Syndrome (POTS) and Myalgic Encephalomyelitis/Chronic Fatigue Syndrome (ME/CFS) can help—or harm—patients. This session examines the mechanisms behind paradoxical exercise responses and presents rehabilitative strategies to optimize outcomes. With these conditions increasingly seen post-COVID, physiatrists play a key role in management. Attendees will gain practical skills through tailored rehabilitation approaches and a hands-on demonstration led by a physical therapist.



Sideline Coverage Scenario Workshop

Location: Ballroom B, 3rd Floor

Shane Drakes, MD, Samuel Dona, Jr., MD, Anusha Lekshminarayanan, MD, Bram Newman, MD, Johan Latorre, MD

An interactive, case-based workshop on sideline sports coverage for athletes of all ages and abilities. Participants will work through real-world scenarios, including head and spine injuries, abdominal trauma, autonomic dysreflexia, cardiac arrest, exercise-associated collapse, and pediatric fractures. Led by an expert faculty team, attendees will gain practical skills in assessment, emergency management, and decision-making in acute sports-related situations.





**The Complexities of Consciousness: Differentiating Overlapping Syndromes, Understanding Biases, and Mastering Assessment in Unresponsive Patients**

**Location: 209 ABC**

Jennifer Russo, MD, Bei Zhang, MD, Daniel Krasna, MD, Arline Edmond, MD, Matthew Puderbaugh, DO, Cherry Junn, MD, Darcey Hull, DO, Erika Trovato, DO, Rosanna Sabini, DO, Jennifer Wu, MD, PhD

PM&R practitioners often feel uncomfortable assessing low-level neurologic patients due to limited exposure, overlapping syndromes, and unconscious biases. This session introduces common biases, clinical mimics of disorders of consciousness, and overlapping syndromes. Through small-group case discussions, attendees will explore impacts on diagnosis, prognosis, and care, and learn debiasing strategies to build confidence and set patients up for success during assessments.



**Treating Long COVID: We Can Help! A Comprehensive Multidisciplinary Outpatient Rehabilitation Approach**

**Location: 203**

Ava-Kathleen Rybicki, MA, Benjamin Abramoff, MD, Timothy Dillingham, MD, Liliana Pezzin, PhD, William Niehaus, MD, Abby Cheng, MD, Jacqueline Neal, MD, Monica Kuns, MA, John Barry, PT

Attendees will gain practical tools to recognize and diagnose Long COVID, identify treatable comorbidities, and deliver equitable, patient-centered care. The session will share protocols and findings from a randomized trial demonstrating interventions to improve physical and cognitive function while safely preventing post-exertional malaise/exacerbation. Participants will leave better prepared to support patients with Long COVID and manage this often disabling condition in clinical practice.



**Physical Therapy Administration**

**Location: 103 AB**

Lori McKenna

Participants will engage in case-based learning surrounding Mt. Sinai's integration of physical therapy with PM&R and the management of physical therapy outpatient (PT OP) practices.

**POSTER GALLERY RECEPTION**

**5:00PM - 6:30PM**

**Location: Expo Hall**

**PRESIDENT'S WELCOME RECEPTION**

**6:30PM - 8:00PM**

**Location: Expo Hall**

Hosted by AAP President Christopher Visco, MD and NewYork-Presbyterian/ Columbia University, kick off the conference immersed in the vibrant culture of San Juan with drinks, local food and music, and some island flare.



**EDUCATIONAL SESSIONS 1**

**8:15AM - 9:15AM**



**Cardiac Rehabilitation Across the Continuum of Care**

**Location: 202 A**

Laura Malmut, MD, Leslie Rydberg, MD, Kim Barker, MD, Sarah Eickmeyer, MD, Matthew Haas, MD, Brianna Ritz, MD  
This session reviews advanced cardiac rehabilitation across the care continuum—from chronic heart disease to pre- and post-operative periods and long-term management. Using case-based learning, attendees will explore updates in surgical and medical management, rehabilitation interventions, the role of physiatry, and related medical and functional outcomes.



**Going Beyond: Neuromodulation in Acquired Brain Injury**

**Location: 208 ABC**

Cherry Junn, MD, Rosanna Sabini, DO, Dmitry Esterov, DO, Benjamin Nguyen, MD, Jennifer Russo, MD  
Explore the science of neuro-modulation after acquired brain injury, including neuroplasticity, current non-invasive and invasive techniques, and emerging technologies such as brain-computer interfaces, highlighting future strategies for restoring function.



**Innovations in Diagnosis and Treatment of Athletic Hip-Spine Syndrome**

**Location: 202 BC**

George Ross Malik, MD, James Wyss, MD, Kevin Ozment, MD, Ryan Nussbaum, DO

Hip-spine syndrome is increasingly recognized in young athletes, with conditions like femoroacetabular impingement (FAI) and lumbar spondylolysis contributing to its development. Early identification and treatment can reduce chronic hip and spine problems. Attendees will learn to use advanced hip and lumbar imaging techniques and perform radiographic calculations to detect pathologies and potentially limit progression of hip-spine syndrome.



**Leveraging Your Spasticity Practice for Academic Productivity**

**Location: 201 AB**

Michael Saulino, MD, Kimberly Heckert, MD, Monica Verduzco-Gutierrez, MD

This session will explore practical strategies for transforming clinical work in spasticity management into meaningful academic output. Attendees will learn how to identify opportunities for research, quality improvement, case reporting, and educational scholarship within their everyday practice. Through practical examples and expert guidance, physiatrists will gain tools to increase academic productivity, contribute to the field, and enhance career development—without needing a traditional research infrastructure.



**Lifestyle Changes as Medicine: The VA Leading the Way in Whole Health Integration**

**Location: 203**

April Pruski, MD, Ronald Shin, DO, John Sollenberger, DO, Benjamin Seidel, DO, Heath Kelly, MD, Somnang Pang, DO

Explore the role of lifestyle medicine in Veteran care, including its impact on orthobiologic outcomes, chronic disease management, and rehabilitation. Speakers will discuss integrating lifestyle medicine into residency training, developing Whole Health clinics, and physiatry's leadership role. Topics include complementary therapies, exercise as medicine, nutrition for brain injury recovery, and lifestyle interventions for mild TBI and concussion. Attendees will gain practical insights into innovative approaches shaping the future of Whole Health care for Veterans.



**Precision Rehabilitation**

**Location: 209 ABC**

James Cotton, MD, PhD, John Whyte, MD, PhD, Amy Wagner, MD, W. David Arnold, MD

Precision medicine has transformed fields like oncology, but rehabilitation has lagged due to limited data and conceptual frameworks. Advances in biomarker-based outcomes, AI-powered movement analysis, structured intervention documentation, and targeted therapies—including genetic interventions—are poised to change this. Attendees will explore rapid progress in these areas and a framework for future interdisciplinary growth in rehabilitation.



**Reaching the Dean's Office: Understanding the Dean's Office Expectations and Academic Medical Center Priorities**

**Location: 103 AB**

Ross Zafonte, DO, Raj Mitra, MD

Learners in academic medicine often focus on clinical, research, and teaching work without fully understanding institutional priorities. Explore the internal dynamics of academic leadership—financial realities, fundraising pressures, success metrics, and research priorities—to navigate careers strategically and align goals with institutional expectations. Through presentations, leader Q&A, and case-based discussions, participants will learn how decisions are made and how to contribute meaningfully while preparing for future leadership roles.



**Rehabilitation Systems of Care of the Future**

**Location: 104 C**

Preeti Raghavan, MD, Farhaan Vahidy, PhD, Mooyeon Oh-Park, MD

This course will describe the rationale and implementation of a systems of care approach in rehabilitation to mitigate long term disability and increase the health span.





**PLENARY SESSION: The Psychology of Courage and Inaction: Strategies for Fostering an Ethical Bystander**

**9:30AM – 10:45AM**

**Location: Ballroom A, 3rd floor**  
*Catherine Sanderson, PhD*

Drawing on psychology and neuroscience, the keynote explores why most people stay silent in the face of sexual harassment, racism, bullying, and other problematic behavior—allowing such acts to persist. Building on Martin Luther King Jr.’s warning about the “silence of the good people,” the session offers practical strategies for individuals and organizations to overcome inaction and foster an ethical bystander culture. The plenary will be followed by commentary and a moderated discussion with AAP President Chris Visco, MD.

**REFRESHMENTS & LEARNING LAB/ DEMO PODS**

**10:30am – 11:15am**

**Location: Expo Hall**

**NEW KNOWLEDGE SESSIONS**

See page 32 to select your topic.

**11:15am – 12:15pm**

**LUNCH & LEARN**

**12:30pm–2:00pm**

**Location: Expo Hall**

**EDUCATIONAL SESSIONS 2**

**2:00PM – 3:00PM**



**Brain and Body: Lessons Caring for Athletes Across their Health Span**

**Location: 208 ABC**

*Daniel Daneshvar, MD, PhD, Adam Tenforde, MD, Meagan Wasfy, MD*

Elite athletes in contact sports face long-term health challenges from repetitive traumatic injuries, affecting cardiovascular, musculoskeletal, and cognitive systems. Experts in sports medicine, cardiology, and neuroscience will present research, evidence-based interventions, and case studies, offering a holistic view of injury and health risk interplay. Attendees will learn to develop specialized care plans and engage in interactive presentations and a panel discussion to foster interdisciplinary dialogue.



**Cardiovascular Health after Traumatic Brain Injury**

**Location: 103 AB**

*Shanti Pinto, MD, Bhaskar Thakur, PhD, Simon Driver, PhD*  
Traumatic brain injury (TBI) is increasingly recognized as a chronic condition affecting health and function across the lifespan. Evidence shows individuals with TBI face higher cardiovascular risk, regardless of injury severity. The session will explore the link between cardiovascular and brain health, why TBI increases cardiovascular disease and mortality risk, and the effectiveness of a novel lifestyle intervention to improve cardiovascular outcomes after TBI.



**Demystifying SCI Medical Challenges for Community Care Providers**

**Location: 209 ABC**

*Christine Cleveland, MD, Kaitlyn DeHority, MD, Amanda Harrington, MD*

Patients with spinal cord injuries (SCI) face complex needs that require coordinated care, yet primary care providers often receive little formal training in SCI management. The session highlights strategies from academic physiatry to build primary care provider (PCP) capacity, knowledge, and skills, and foster collaborative care. These approaches are also applicable to other populations commonly managed by physiatrists, including traumatic brain injury, spina bifida, cerebral palsy, and neurorehabilitation patients.



**Disability Education: A National Update**

**Location: 203**

*Leslie Rydberg, MD, Allison Kessler, MD, Margaret Turk, MD, Jennifer Russo, MD, Nethra Ankam, MD*

Learn about the importance of integrating disability education across medical training, including initiatives like the Disability Integration Toolkit, Disability Education Network, and ACGME Disability Education Summit. The session also addresses support for physicians and students with disabilities through efforts by Docs with Disabilities and the Access in Medicine Summit. Attendees will gain insights into core competencies, advocacy efforts, and strategies to embed disability education into medical curricula.



**Global Health Medicine in PM&R: Paradigm Shift in Making a Lasting Impact on International Communities**

**Location: 202 A**

*George Ross Malik, MD, Prakash Jayabalan, MD, PhD, Yunna Sinskey, MD, Kaile Eison, DO*

Access to medical care remains limited worldwide, and PM&R has been slow to integrate global health into training. The International Rehabilitation Forum (IRF) addresses this gap through a two-year PM&R fellowship for African physicians, developing local experts and mentoring them to create national training programs encompassing research, teaching, and patient care.



**Manuscript Accepted or Rejected? Navigating the Peer Review Process in PM&R**

**Location: 201 AB**

*Sandeep Subramanian, PT, PhD, Monica Verduzco-Gutierrez, MD, Walter Frontera, MD, PhD*

Gain a behind-the-scenes look at what happens after submitting a journal manuscript. Speakers will cover the initial review steps, peer-reviewer selection, and common manuscript errors in rehabilitation and PM&R. Attendees will also learn how editorial decisions are made and how to craft professional, effective responses to reviewer feedback.



**PM&R Boards Part I & II: Tips for Success from the ABPMR**

**Location: 104 C**

*Vu Nguyen, MD, Christopher Garrison, MD*

As residents approach the PM&R boards, ABPMR leaders provide guidance for the two-part initial certification process. Attendees will learn what to expect for Part I (computer-based) and Part II (oral) exams, including current research insights and practical tips for success.



**Sacroiliac Joint Pain: Evidence for Treatments and Therapeutic Approach**

**Location: 202 BC**

*Maria Grabnar, MD, Seyed Ali Mostoufi, MD, Jayesh Vallabh, MD, Andrew Sherman, MD, Aaron Yang, MD*

Review treatments and therapeutic evidence for sacroiliac (SI) joint pain, a common cause of low back pain seen in PM&R and pain medicine practices. Panelists and attendees will discuss a treatment algorithm, addressing evidence-based approaches and strategies when interventions are denied by insurance. Clinicians will gain practical insights for managing SI joint pain in real-world practice.

**REFRESHMENTS & LEARNING LAB/ DEMO PODS**

**3:00pm – 3:45pm**

**Location: Expo Hall**

**EDUCATIONAL SESSIONS 3**

**3:30PM – 5:00PM**



**Building a Novel Cancer Rehabilitation Program: Triumphs, Challenges, and Insights**

**Location: 104 C**

*Sammy Wu, MD, Obada Obaisi, MD, Evelyn Qin, MD, Jessica Cheng, MD, Adrian Cristian, MD, Franchesca König, MD*

Discover the successes and challenges of building cancer rehabilitation programs. Nationally recognized physiatrists will share strategies for overcoming barriers, forming partnerships, and expanding services. Attendees will leave with practical insights to enhance existing programs or create new ones, improving care for cancer survivors.



**Culture and Language in Rehabilitation: Centering Patient Identity in Equitable Care**

**Location: 201 AB**

*Ivani Proaño, DO, Sheital Bavishi, DO, Thiru Annaswamy, MD, Haris Choudry, MD, Chaitanya Konda, DO, Grace Suttle, MD, Audrie Chavez, MD, Miguel Escalon, MD, Ana Ortiz-Santiago, MD*

Learn how culture and language shape rehabilitation experiences and outcomes. The session covers cultural perspectives—including Hindu, Muslim, Christian, and Latino views on disability, healing, and caregiving—and emphasizes language-concordant care in neurorehabilitation and pediatrics. Through real-world cases and interdisciplinary insights, attendees will gain strategies for inclusive, identity-aligned care, focusing on in-person interpretation, culturally responsive communication, and institutional practices that support equity.



**Highlighting AAP’s International Rehabilitation Partnerships: A Live Podcast Recording**

**Location: 202 A**

*Heakyung Kim, MD, Haylee Yepson, DO, Maya Therattil, MD, Rochelle Dy, MD, Peter Lim, MD, Henry Lee, DO, Queen Mollel, Nicephorus Rutabasibwa, Hamis Shafii, Hasna Tiu Lim, MD*

Hosted by AAP’s Global Academic Physiatry Subcommittee (GAPS), this session features recording of podcast episodes featuring international rehabilitation partnerships, open to live audience.



**Innovations in Neuromodulation: Translating Research to Clinical Practice in Neurorehabilitation**

**Location: 209 ABC**

*Gerard Francisco, MD, Sheng Li, MD, PhD, Argyrios Stampas, MD, Radha Korupolu, MD, Michael Nguyen, MD*

This session showcases cutting-edge neuromodulation strategies to improve function, reduce symptoms, and enhance quality of life for individuals with neurological conditions. Presentations cover tibial nerve stimulation for overactive bladder in SCI, BreESim for SCI-related neuropathic pain, and paired transcutaneous auricular vagus nerve stimulation (taVNS) with rehabilitation for upper extremity recovery. Lessons from vagus nerve stimulation (VNS) in stroke rehabilitation will highlight clinical efficacy and real-world integration. Attendees will gain insights into current research, clinical trial methods, and translating evidence-based neuromodulation into practice.





**Paging Dr. Rehab! Recognizing and Managing Critical Situations On-Call**



**Location: 208 ABC**

Syed Raza Husain, DO, Jennifer Russo, MD, Brittany Snider, DO, Gabriel Berenbeim, DO, Lauren Sibley, MD, Nicole Barylski, DO, Rachel Murray, MD, Vyvan Nguyen, MD, Palak Patel, MD

On-call situations can be daunting, but preparation makes all the difference. This interactive workshop, led by residents, fellows, and attendings, guides participants through high-stakes, real-world scenarios—such as autonomic dysreflexia in SCI or acute agitation in brain injury. Attendees will practice clinical reasoning, validated assessment tools, and practical, evidence-based strategies to be ready when the pager goes off at 2 AM.



**Ready to Run with AI? Experience AI's Impact Across PM&R Administration, Clinical Care, and Education**

**Location: 203**

William Niehaus, MD, Kim Barker, MD, Jamie Elliott, MPA, Alethea Appavu, DO, Michelle Konkoly, MD

See how AI is transforming PM&R administration, clinical practice, and education. Topics include leadership strategy, clinical operations, and teaching tools, with a live, safety-focused demo showcasing ambient scribing and rapid content generation while addressing bias, accuracy, and governance. Attendees will leave with vetted prompts, rollout checklists, and a compliance-ready adoption plan.



**Redefining Leadership for Women in PM&R**

**Location: 202 BC**

Anne Felicia Ambrose, MD, Carmen Terzic, MD, PhD, Sara Cuccurullo, MD, Monica Verduzco-Gutierrez, MD, Rita Hamilton, DO, Nneka Ifejika, MD, Mooyeon Oh-Park, MD, Preeti Raghavan, MD, Jennifer Russo, MD, Talya Fleming, MD, Erika Trovato, DO, Danielle Perret Karimi, MD, Lyn Weiss, MD, Marlis Gonzalez-Fernandez, MD, Aye Mon Win, DO

Leadership in PM&R has often followed hierarchical models that may not reflect women's strengths and styles. This session reimagines leadership for women, emphasizing authenticity, resilience, well-being, and innovation. Through panel discussion and interactive breakouts, participants will explore diverse approaches, challenge traditional norms, and develop practical strategies to lead with confidence and impact.



**Words that Work: Communication Skills for Challenging Conversations in Rehabilitation**

**Location: 103 AB**

Scott Campea, MD, Julia Fram, MD, Grady Paden, MD

Effective communication is essential for delivering serious news to patients with life-altering conditions across rehabilitation settings. The session covers why these skills matter, introduces a practical framework for conversations, and provides practice crafting patient-centered "headlines" and responding to emotional reactions. Attendees will also receive resources to apply these strategies in their own practice.

**POSTER GALLERY RECEPTION**

**5:00PM - 6:30PM**

**Location: Expo Hall**

**MEDICAL STUDENT QUIZ BOWL**

**6:30PM - 8:00PM**

**Location: Ballroom A, 3rd Floor**

Meet & greet with your Medical Student Council (MSC) and med student peers across the country! Which team will bring home the win?

**RESIDENT/FELLOW NETWORKING NIGHT**

**7:30PM - 9:00PM**

**Location: Sheraton Puerto Rico Resort & Casino, poolside**

Supported by:



Unwind from the day's sessions with food, drinks, and fun!

**RSVP Required**

**AAP MEMBER CAUCUS AND AWARDS BREAKFAST**

**7:30AM - 9:15AM**

**Location: Ballroom A, 3rd Floor**

Come together with your fellow AAP members and leadership to discover what we've accomplished over the past year, and what's on the horizon. Stay for our Awards Ceremony to help us honor deserving rock-star physiatrists.

**RMSTP NEW KNOWLEDGE PLENARY**

**9:15AM - 10:00AM**

**Location: Ballroom A, 3rd Floor**

Levi Bale, MD, Quinn Tate, MD, Nicole Katz, MD

Discover the best of the cutting-edge research from emerging leaders in our Rehabilitation Medicine Scientist Training Program (RMSTP).

**EDUCATIONAL SESSIONS 1**

**10:15AM - 11:15AM**



**Essentials of Secondary Lymphedema and Wound Care**

**Location: 201 AB**

Ady Correa, MD, Rosalynn Conic, MD, PhD, Lauren Orada, DPT

Secondary lymphedema can greatly affect function and quality of life but is often underrecognized. The session provides an evidence-based approach to distinguishing lymphedema from similar conditions, covering pathophysiology, clinical presentation, and diagnostic criteria. Rehabilitation strategies—including compression therapy, manual lymphatic drainage, exercise, and basic wound care—are discussed, integrating updated literature and expert consensus to support clinical decision-making.



**From Advocacy to Action: Engaging Learners in Activism to Build and Expand a PM&R Career**

**Location: 203**



Monica Verduzco-Gutierrez, MD, John Sanchez, MD, Ashlee Jaffe, MD, Kayleigh Crane, BS, Lisa Gong, MA, Grace Olson, MA, Rekha Swamy, BA

Advocacy shapes the future of rehabilitation medicine, improving patient outcomes, influencing policy, and promoting diversity, equity, and inclusion. Integrating advocacy into education enhances learning and supports career growth in academia, leadership, and policy. Panelists will share personal experiences, successful strategies, and guidance for participants to map their own careers through advocacy-driven work.



**Is the Lecture Dead? Incorporating Principles of Learning Science to Enliven your Resident Didactics**

**Location: 104 C**

Karen Barr, MD, Jean Luc Banks, MD, Ryan Nussbaum, DO, Kerry DeLuca, MD, David Rivetti, MD

Advances in technology and evolving learner preferences—accelerated by COVID-19—have transformed educational delivery. The session reviews key learning theory principles and practical ways to integrate them into busy clinical workflows. Using real-world examples, presenters share successes, challenges, and strategies for effective teaching, concluding with guidance on when alternative formats may outperform traditional lectures for engaging learners.



**Parenthood and Physiatry: The Unasked Questions and Untold Truths**



**Location: 202 BC**

Sharon Bushi, MD, Lydia Smeltz, MD, Gwendolyn Sowa, MD, PhD, Jessica Hupe, MD, Erika Trovato, DO, Stephanie Rand, DO, Kristen DeVries, DO

Explore parenthood in physiatry through national survey results on residents' and fellows' experiences with family planning. A diverse panel of physiatrist-parents will share personal stories, answer questions about family planning, resources, and workplace culture, and engage attendees' reflections. The session concludes with practical resources for personal and systemic support.



**Professionalism Matters! Real Cases from the American Board of Physical Medicine and Rehabilitation (ABPMR)**

**Location: 202 A**

Carolyn Kinney, MD, Jeffery Johns, MD

Professionalism is a strategic focus for the ABPMR, with an approved definition guiding expectations in PM&R. The board regularly reviews professionalism breaches that may affect certification. Attendees will engage in a participatory discussion of de-identified cases, sharing perspectives and voting on board certification outcomes.



**The Paralympic Athlete: Managing Musculoskeletal, Neurological and Cardiovascular Complications**

**Location: 209 ABC**

Ana Cintron, MD, Isabel Borrás, MD, Valeria Lozada Miranda, MD

Approach to the para-athlete's needs regarding training, injury prevention and management will vary according to the athlete's unique impairment. This course discusses the approach to sports injuries based on impairment, considerations to be taken in the athlete with neuromuscular conditions, and the cardiovascular complications which may be encountered.





**The Sub-I Rx: Prescribing Success on your PM&R Rotations**



**Location: 208 ABC**

Jennifer Russo, MD, Arline Edmond, MD, Kristin Wong, MD, Ashlee Bolger, MD, Ravi Kasi, MD, Sophia Kiernan, MD, Grace Meehan, DO, Donald Kasitnon, MD

Excel on the PM&R wards with insider tips from residents and faculty. Learn what attendings and residents expect, master communication strategies, and develop a plan for seeking and applying feedback. Whether aiming for honors or building confidence for intern year, attendees will gain practical tools to thrive during their PM&R Sub-I.

**RREMS NEW KNOWLEDGE SESSION**

**11:30am - 1:00pm**

**Location: 203**

Kira Brenner, MS, Alyssa Wong, Erik Buetow, Patrick Brewer, Gracejit Chahal, Shreyaa Khanna, Nicholas Perry

Engage with innovative research and champion the next generation of physiatrist researchers in our Rehabilitation Research Experience for Medical Students (RREMS).

**SNACKS & FAREWELL TO EXHIBITORS**

**11:15AM - 12:00PM**

**Location: Expo Hall**

**EDUCATIONAL SESSIONS 2**

**12:15PM - 1:15PM**



**Assessing Risk and Ability to Tolerate Cancer Therapies Using Physical Function as a Guide: A Physiatrist Approach**

**Location: 201 AB**

Adrian Cristian, MD, Romer Orada, DO

The toxicities of cancer treatments can make it difficult for survivors to tolerate them leading to dose reductions and discontinuations of proposed cancer therapies. In this course, attendees will learn how to assess for and optimize the ability of cancer survivors to successfully complete cancer treatments.



**Collaborative and Novel Approaches to Managing Hemiplegic Shoulder Pain**

**Location: 209 ABC**

Bram Newman, MD, Mitchell Burke, DO, Caroline Lee, MD, Moorice Caparo, MD, Clayton Mucha, DO

Hemiplegic shoulder pain commonly affects patients with stroke, brain injury, and spinal cord injury. The session reviews relevant anatomy, neurologic and musculoskeletal contributors, and evidence-based interventions. Novel approaches such as peripheral nerve stimulation and cryoneurolysis will be discussed, emphasizing the value of a collaborative, multidisciplinary approach to care.



**E-Learning in Physiatric Medical Education: Key Insights for Both Learners and Educators**

**Location: 104 C**

Stephanie Rand, DO, Andrew Gitkind, MD, Adam Nessim, MD, Ashlee Bolger, MD, Nikola Dragojlovic, DO

E-learning is reshaping medical education, providing new tools for residents and educators. A panel of learners and faculty will share strategies for integrating digital tools, followed by interactive breakout stations exploring question banks, digital flashcards, AI-powered study aids, and multimedia platforms like Sketchy.



**Exercise as Medicine: International Perspectives**

**Location: 202 BC**

Amy Ng, MD, Jennifer Baima, MD, Tara Rampal, MBBS, Stephanie Otto, PhD

Exercise finally has a place at the table as a true "medicine." We will discuss case studies in exercise as medicine from three different disciplines in three different countries. Not only is care delivery different in the United States and Europe, assessing outcomes varies widely. With rising costs and greater worldwide connectivity, now is the time to capitalize on innovative care methods such as exercise to enhance patient reported outcomes and treatments.



**From Residency to Fellowship and Beyond: Round Table Mentorship for the Next Generation of Physiatrists**

**Location: 208 ABC**

Panel of experts moderated by Nicole Katz, MD

Designed for PM&R residents navigating fellowship applications and early career transitions, join us for informal, small-group roundtable discussions. Each table focuses on a specific fellowship or the transition to early career, with mentors including current or recent fellows and program leadership. Attendees gain a candid environment to ask questions, learn from experiences, and build professional connections.



**Pseudobulbar Affect and Abulia in Brain Injury**

**Location: 202 A**

Matthew Puderbaugh, DO, Meta Williams, DO, Chandra Bouma, MD

Pseudobulbar Affect (PBA, also known as Pathological Laughing and Crying) and Amotivational Syndromes (also known as Apathy or Abulia) are clinical syndromes that have been reported in Traumatic Brain Injury, but are not well understood and may go unrecognized. This course will cover these conditions and what treatment options are available.

**EDUCATIONAL SESSIONS 3**

**1:30PM - 2:30PM**



**Advancing Rehabilitation Outcomes for Diseases of the Joint: The Role of Tissue Engineering in Cartilage Repair**

**Curated by ARRC**

**Location: 201 AB**

Hirofaka Iijima, PhD, PT, Miguel Otero, PhD, Riccardo Gottardi, PhD

This session will focus on the latest advancements in tissue engineering and gene therapy for cartilage repair.



**Best Musculoskeletal Science of 2024: A Panel Review and Audience-Judged Journal Club**

**Location: 202 BC**

Gerardo Miranda-Comas, MD, William Micheo, MD, Walter Frontera, MD, PhD, Manuel Mas, MD

An interactive, expert-led journal club reviewing five of the most impactful 2024 musculoskeletal research publications. Specialists will analyze study design, methodology, and clinical relevance, while attendees engage in real-time polling and help select the most influential study. The session sharpens critical appraisal skills and enhances application of cutting-edge research to clinical practice, ideal for students, residents, fellows, and faculty.



**First Impressions Matter: Optimizing Your CV and Interview Performance**

**Location: 208 ABC**

Michael Saulino, MD, Ian Maitin, MD

This interactive session will equip physiatrists with practical strategies to enhance their CVs and interview skills for career advancement. Participants will learn proven approaches to crafting clear, impactful CVs and effectively communicating their strengths in interviews. Through real-world examples, expert insights, and practical tips, attendees will gain tools to confidently present themselves in competitive physiatry training, fellowship, and job opportunities.



**Pelvic Pain: Electrodiagnostic, Ultrasound, Cancer and Interventional Considerations**

**Location: 104 C**

Paula Ackerman, DO, Courtney Brown, MD, Kathryn Alfonso, DO, Rupali Kumar, MD

Chronic pelvic pain (CPP) is disabling, yet often underdiagnosed and undertreated. Providers will learn to recognize CPP as a functional disability, navigate systemic barriers, and understand key anatomic and electrodiagnostic considerations. Case-based discussions cover function-driven rehabilitation strategies, including manual therapy, ultrasound-guided interventions, and botulinum toxin injections. Attendees will gain practical tools to improve outcomes and access resources for ongoing pelvic rehabilitation learning.

**CONCURRENT PROGRAMS**

These signature AAP programs will have ongoing workshops and sessions designed for this year's participants.

**PROGRAM FOR ACADEMIC LEADERSHIP (PAL)**

Leadership training directed by John Chae, MD, William Bockenek, MD and Dixie Aragaki, MD.

Visit [physiatry.org/PAL](https://physiatry.org/PAL) to learn more.



**REHABILITATION MEDICINE SCIENTIST TRAINING PROGRAM (RMSTP)**

Research training directed by Michael Boninger, MD and John Whyte, MD, PhD.

Visit [physiatry.org/RMSTP](https://physiatry.org/RMSTP) to learn more.

**ADVOCACY & PUBLIC POLICY LEADERSHIP (APPL) PROGRAM**

Advocacy training directed by Chloe Slocum, MD, and Greg Worsowicz, MD.

Visit [physiatry.org/APPL](https://physiatry.org/APPL) to learn more.





# New Knowledge Sessions



Friday, February 20 | 11:15AM-12:15PM

## Administrative, Leadership, Education, DEI, & Other/General

Location: 202 BC

- Transforming Medical Education Through Disability Curriculum: Outcomes from a National Initiative  
*Priya Chandan, MD, PhD*
- Longitudinal Outcomes of an Interdisciplinary Curriculum Model Integrating Rehabilitation Medicine for Pre-Medical Students  
*Ansh Mittra*
- Perceived Barriers to Diversity in Physical Medicine & Rehabilitation Residency Programs: A National Survey of Program Directors  
*Bernardo Gonzalez, MD*
- Obesity Management in Adults with Spina Bifida: Impact of Hydrocephalus, Depression, and Counseling  
*Joseph Yap*

## Musculoskeletal

Location: 103 AB

- Therapeutic Efficacy of siAbat Nanoparticle Intra-Articular Injection in Mitigating Osteoarthritis Pain: Evidence from Knee and Dorsal Root Ganglion Analyses in Mice  
*Chengchou Ai*
- Using C-Score on Weight-Bearing CT as a Predictive Biomarker for Progression of Knee Osteoarthritis and Pain  
*Susan Li, MD*
- Personalized Medicine Approach to Injections: The Injection Mechanisms Predicting Arthritic Clinical Treatment (IMPACT) Pilot Study  
*Prakash Jayabalan, MD, PhD*
- Relationship between Pre-Injection Serum Biomarker Profiles and the Outcomes of Intra-Articular Knee Injections in Patients with Knee Osteoarthritis  
*Audrey Lazar, BA*

## Pediatrics & SCI

Location: 201 AB

- Rehabilitation Outcomes in Children with Rasmussen Encephalitis Post-Hemispherectomy: A Retrospective Cohort Study  
*Leah Manimalethu*
- Does Body Weight Support Improve Neural and Biomechanical Measures During Treadmill Gait in Children with Unilateral Cerebral Palsy?  
*Rajit Banerjee, MD*
- Bromocriptine Use in Pediatric Disorders of Consciousness: Patterns, Dosing, and Functional Outcomes in Inpatient Rehabilitation  
*Alexandra Wolfe, DO*
- Evaluation of Active Permeable Pressure Relieving Dynamic Seating System Prototypes in a Focus Group and Mechanical Testing  
*Jeffrey Petigrow, BBA*

## RREMS

Location: 203

- Role of Biomarkers in Understanding the Effects of Respiratory-gated Auricular Vagal Afferent Nerve Stimulation (RAVANS) on Post-treatment Lyme Disease Syndrome (PTLDS)  
*Andrew Luo*
- 5HT2C Agonism Improves Resistance Training Benefits in Aged Mice  
*Charles Wendt, BS*
- Optimizing Regenerative Rehabilitation Treatments for Acute Skeletal Muscle Injury  
*Sebastián Peñalosa, BA*
- A Pilot Educational Intervention to Improve Diet-Related Self-Efficacy and Adherence: Knee Osteoarthritis Lifestyle Education (KALE) Study  
*Isabel Gippo, MPH*

## RREMS & TBI

Location: 202 A

- Exploring the Relationship Between Quality of Life and Glasgow Outcome Scale-Extended Scores in Moderate-to-Severe Traumatic Brain Injury: A Multi-Domain Regression Approach  
*Ramzi Badra, BS*

- Quantifying Compensatory Movements Using Pose Estimation During a Shoulder Abduction Task After Stroke  
*Anjana Ganesh*
- Blink Conditioning Deficits in Spinocerebellar Ataxias: A Pilot Study using BlinkLab  
*Shreya Chalapalli*
- Relationship Between the Polytrauma Tetrad and Cognitive Impairment After Mild Traumatic Brain Injury  
*Luke Ignell*

## SCI

Location: 209 ABC

- Are We Over Relying on the T6 Dermatome to Determine Autonomic Dysreflexia Risk After SCI? An Analysis of Symptoms and Detailed Underlying Physiology  
*Ryan Solinsky, MD*
- Relationship Between Depression During Inpatient Rehabilitation and Health, Participation, and Satisfaction with Life at One-Year Post-Injury for Persons with Spinal Cord Injury  
*Drew Redepenning, MD*
- Feasibility and Comparative Effectiveness of Tidal Volume Strategies in Subacute Cervical Spinal Cord Injury: A Pilot Randomized Trial  
*Radha Korupolu, MD*
- Chronic Pain and Depression Subgroups One- and Five- Years Post-Spinal Cord Injury  
*Aila Malik, MBBS*

## Spasticity/Movement Disorders & Neuromodulation

Location: Ballroom B, 3rd Floor

- Evaluating Risk Factors for Spasticity After Stroke: A Systematic Review and Meta-Analysis  
*Youssef Soliman*
- Cryoneurolysis in Spasticity Management Spasticity  
*Matthew Ross*
- Enhancing Hybrid Exoskeleton Performance with Spatially Distributed Asynchronous Stimulation and Ultrasound Imaging-based Fatigue Measurements  
*William Filer, MD*
- Augmenting Robot-Assisted Training with High-Definition tACS to Improve Motor Recovery in Stroke  
*Meng Hao, PhD*

## Sports & Pain Medicine

Location: 208 ABC

- A Study of Functional Impact of Percutaneous Lumbar Decompression (MILD Procedure) in Symptomatic Severe Lumbar Stenosis Across Spectrum of Age and Disease Severity  
*Seyed Mostoufi, MD*
- Beyond Exercise Alone: Interventional Physiatry with Basivertebral Nerve Ablation Supercharges Schroth Outcomes in Adult Scoliosis  
*Muhammad uzair Siddique*
- Ultrasound-Guided Truncal Plane Blocks to Prevent Chronic Chest-Wall Pain After Surgery: A Systematic Review of ESP/SAP Versus Systemic Analgesia and Other Regional Techniques  
*Athena Normula, MBS*
- Clinical Outcomes of Different Rehabilitation Protocols After Arthroscopic, Isolated Meniscus Repair: A Systematic Review  
*Sai Unnam*

## Stroke

Location: 104 C

- Rehabilitation in Post-Stroke Patients: Psychiatric Disorders and Their Management in a Retrospective Cohort  
*Maria Rengifo-Varona, MD*
- Advancing Stroke Equity Through Research on Social Determinants of Health: A Roadmap for Trainees and Faculty  
*Aardhra Venkatachalam, MPH*
- Discrepancies in the Recommended Versus Actual Discharge Disposition Following an Acute Stroke Hospitalization  
*Kimberly Waddell, PhD*
- Does Leucine Supplementation Impact Post-Stroke Sarcopenia?: A Review of Evidence and Clinical Implications  
*Mara Martinez Santori, MD*



REIMAGINING RECOVERY

# Technology-Driven Care at Craig H. Neilsen Rehabilitation Hospital



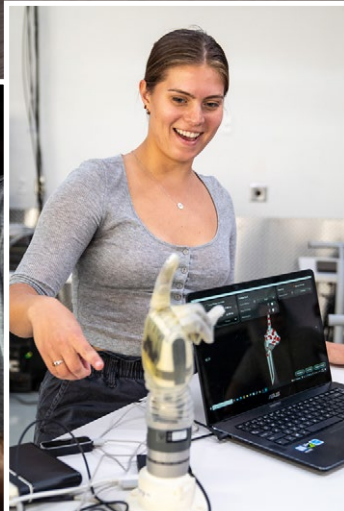
At Neilsen Rehabilitation Hospital, innovation drives everything we do. Our integrated approach to rehabilitation combines smart rooms, advanced assistive technologies, adaptive tools, and customized prosthetics and orthotics to support every patient’s journey toward independence.

Together, these innovations create a seamless continuum of care, where technology meets compassion, and recovery is reimaged.

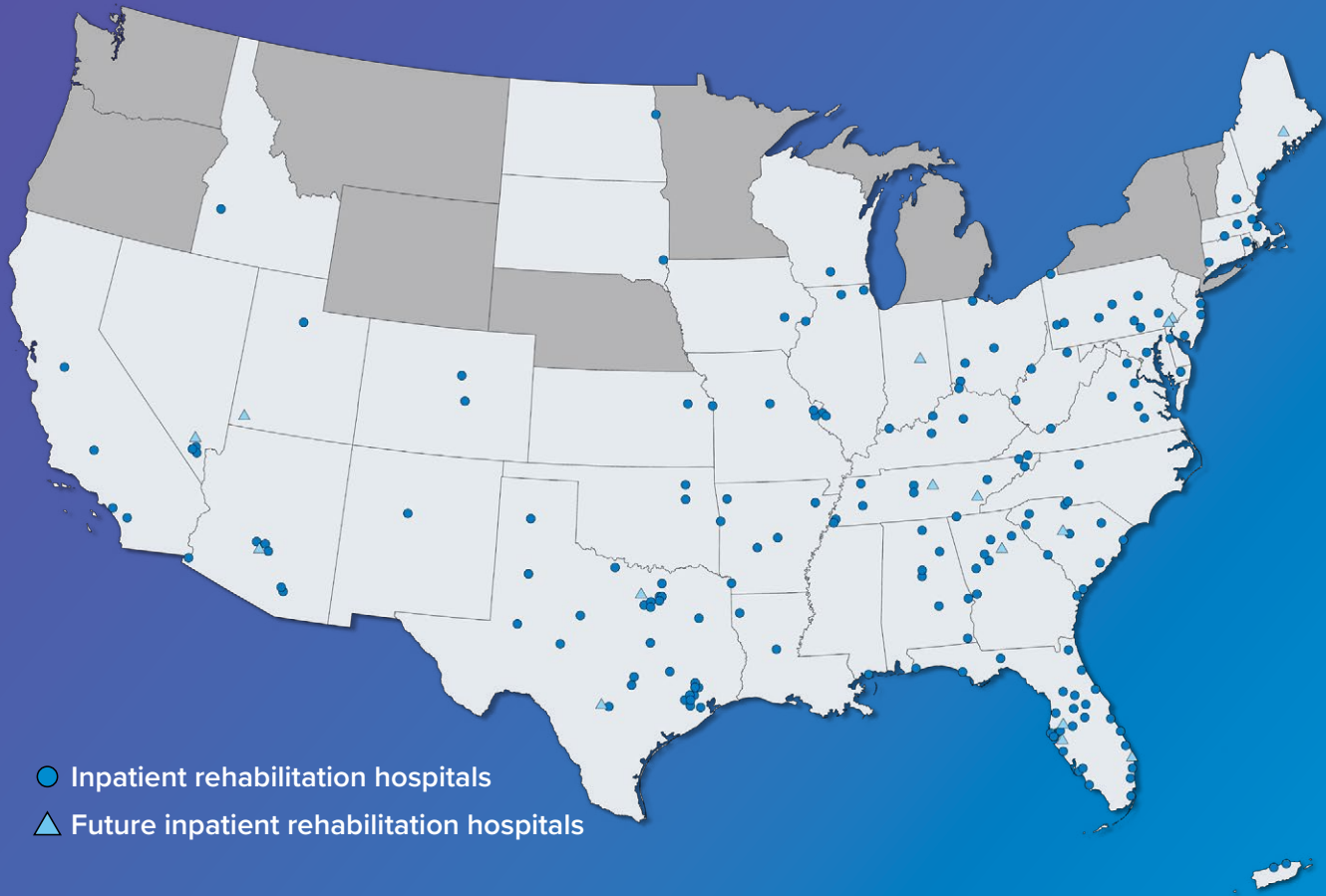
Discover the future of rehabilitation.



Scan the QR code  
to learn more.



Rehabilitation Hospitals



- Inpatient rehabilitation hospitals
- ▲ Future inpatient rehabilitation hospitals



Jamie Boutin,  
Director of Physician Recruitment  
[jamie.boutin@encompasshealth.com](mailto:jamie.boutin@encompasshealth.com)  
205.532.9679

Visit [encompasshealth.com/physician-careers](https://encompasshealth.com/physician-careers) to learn more about our inpatient rehabilitation and independent practice physician opportunities.



**A LEADER** IN PROVIDING EXPERT REHABILITATION CARE



## NATIONALLY RANKED IN REHABILITATION BY U.S. NEWS & WORLD REPORT

50 years of advancing what's possible for patients to obtain optimal function and independence.

### SPECIALIZED PROGRAMS

- Amputee
- Brain Injury and Concussion
- Cardiopulmonary Disorders
- Neuromuscular Disorders
- Pain Management and Sports Medicine
- Parkinson's Disease
- Stroke and Spasticity Management
- Spinal Cord Injury

### ACCREDITATION COUNCIL FOR GRADUATE CONTINUING MEDICAL EDUCATION (ACGME) PROGRAMS INCLUDE:

- Physical Medicine & Rehabilitation Residency Program
- Brain Injury Medicine Fellowship
- Pain Medicine Fellowship



ACCREDITED BY

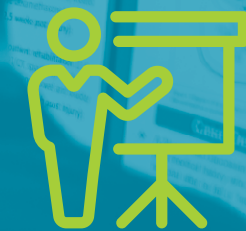


# Poster Gallery Receptions

Thursday, February 19 & Friday, February 20

5:00PM - 6:30PM

Location: Expo Hall, 1st Floor



We are showcasing top-notch poster presentations at Physiatry '26 with over 1,000 case reports and research studies. AAP will be offering refreshments at each reception to help you unwind and have lively conversations with PM&R residents and leading researchers. Here's a list of different topics of interest:

- Administrative, Leadership, & Education
- Electrodiagnostic & Neuromuscular Medicine
- Multiple Sclerosis and other Neurological Conditions
- Diversity, Equity, and Inclusion (DEI)
- Musculoskeletal
- Other /General Medicine
- Pain
- Pediatrics
- Spasticity & Movement Disorders
- SCI
- Sports Medicine
- Stroke
- TBI
- Ultrasound
- COVID Rehabilitation
- Regenerative Rehabilitation
- Neuromodulation





# Emerging Leaders in Research, Training & Patient Care

PHYSICAL MEDICINE & REHABILITATION

## GROWTH

- **Strategic Hiring:** Recruiting top talent to expand expertise and capacity
- **Enhanced Partnerships:** Collaborating with other departments, hospitals, and organizations
- **Focused Leadership:** Aligning with a clear vision and strategic plan for sustainable expansion

## RESIDENCY & FELLOWSHIP OPPORTUNITIES

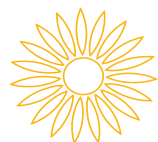
- Physical Medicine & Rehabilitation Residency Program
- Cancer Rehabilitation Fellowship
- Interventional Musculoskeletal/Spine Fellowship

## CLINICAL EXCELLENCE

- Interdisciplinary program at Mark A. Asher Comprehensive Spine Care Center
- Ranked #1 in the state of Kansas for Newsweek's Best Physical Rehabilitation Centers in 2025

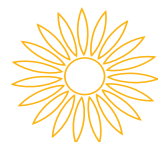
### HISTORY

Department  
founded in 1944  
with 80 years  
of excellence in  
PM&R



### REPUTATION

Rated as a top 25  
PM&R residency  
program by  
reputation in  
Doximity



### RESEARCH

Ranked 15th in  
NIH funding for  
PM&R in 2024  
by Blue Ridge  
Institute

KU Physical Medicine & Rehabilitation is currently looking for the next great leaders in academic and clinical care. If you are interested in learning more about the residency or fellowship programs, or are looking to join our team as faculty, please visit our website at [kumc.edu/pmr](http://kumc.edu/pmr) or contact [seickmeyer@kumc.edu](mailto:seickmeyer@kumc.edu).

# Networking Events



In addition to your committee and council meetings, take advantage of these networking opportunities we've created for you.

## Residency & Fellowship Program Directors (RFPD)

Join together with your fellow program directors across the country for the following networking opportunities:

### RFPD Reception

Tuesday, February 17, 5:00PM – 6:30PM

Location: Convention Center Terrace, 3rd Floor

Supported by:



### RFPD Workshop Breakfast

Wednesday, February 18, 7:00AM – 8:00AM

Location: Ballroom B, 3rd Floor

Supported by: **abbvie**

### RFPD Workshop Lunch

Wednesday, February 18, 12:00PM-1:00PM

Location: Ballroom B, 3rd Floor

Supported by: **IPSEN**

### Career Fair

Wednesday, February 18, 5:30PM – 7:00PM

Location: Sheraton Puerto Rico Resort & Casino

One of our most popular and growing events! Looking for a new challenge or weighing different career paths? Speak to more than 50 institutions recruiting for a variety of positions, including fellowships.

### Department Chairs Networking Reception

Wednesday, February 18, 7:00PM – 8:00PM

Location: 104 AB

Proceeding the Chair Council/Admin Directors special session and business meeting, department chairs and admin directors are invited to come together to enjoy drinks, hors d'oeuvres, and great company.

## Research Leader Networking Reception

Thursday, February 19, 7:00AM-8:00AM

Supported by:



Kick off the day with the AAP Research Committee and Chairs from PM&R departments across the country for a roundtable discussion on the opportunities and challenges facing research departments.

RSVP required

### Junior Faculty Networking Lunch

Friday, February 20, 12:15PM – 2:00PM

Location: Convention Center Terrace, 3rd Floor

Grab a boxed lunch in the Expo Hall and spend some time in the Puerto Rican sunshine with your Junior Faculty Council (JFC)! This is a great opportunity to meet up with old friends and make new connections. RSVP encouraged; **for attendings with less than 5 years of post-training experience only**

### VA Networking Lunch

Friday, February 20, 12:15PM – 2:00PM

Location: Convention Center Terrace, 3rd Floor

Join your VA Council and other VA physicians for this networking lunch. Grab a boxed lunch in the Expo Hall and chat with your peers in the fresh air.

### Residents & Fellows Networking Night

Friday, February 20, 7:30PM – 9:00PM

Location: Sheraton Puerto Rico Resort & Casino, Poolside

Unwind poolside with food, drinks, and cornhole while making new connections.

Supported by:



RSVP required

### Medical Student Quiz Bowl

Friday, February 20, 6:30PM – 8:30PM

Location: Ballroom A, 3rd Floor

Meet and greet your Medical Student Council (MSC) and med student peers from across the country. Which team will bring home the win?

Medical students only

## Committee & Council Meetings

Is your group not listed? Reach out to your leadership for your meeting date and time.

Tuesday, February 17

RFPD Subcouncil

Location: 204  
12:00PM – 1:00PM

Wednesday, February 18

Program Committee

Location: 210  
3:00PM – 4:00PM

LDRC

Location: 101 AB  
4:00PM – 5:00PM

Research Committee

Location: 210  
7:00PM – 8:00PM

Chairs Council

Location: 104 AB  
9:00PM – 9:15PM

Thursday, February 19

Physiatry Foundation

Location: 210  
8:00AM – 9:00AM

Administrative Directors Council

Location: 210  
1:00PM – 2:00PM

Education Committee

Location: 104 AB  
1:00PM – 2:00PM

Friday, February 20

GAPS Committee

Location: 103 AB  
12:30PM – 1:30PM

Medical Student Council

Location: 201 AB  
12:30PM – 1:30PM

Medical Student Educators Council

Location: 208 ABC  
12:30PM – 1:30PM

Diversity Committee

Location: Ballroom B, 3rd Floor  
1:00PM – 2:00PM

VA Council

Location: 209 ABC  
1:00PM – 2:00PM

Saturday, February 21

Residents & Fellows Council

Location: 210  
10:00AM – 11:00AM



# MOVING FORWARD WITH INNOVATION.

**102,000** PERSONS SERVED ANNUALLY

**530+** INPATIENT BEDS SYSTEM WIDE

**100%** FELLOWSHIP MATCH

**108** MEDICAL GROUP PROVIDERS

**2026** PEDIATRIC REHABILITATION HOSPITAL OPENING

**BOOTH #826** NEW PHYSIATRY ADVOCACY COLLABORATIVE



Mary Free Bed is committed to maintaining high-quality, nonprofit physical medicine and rehabilitation throughout the U.S.



## STAY CONNECTED

To learn more, scan the QR code or visit [maryfreebed.com/advisory](https://maryfreebed.com/advisory).



**Mary Free Bed**  
Rehabilitation

# Happening in the Expo Hall

Location: 1st Floor of the Convention Center

Visit the Physiatry '26 state-of-the-art Exhibit Hall, with leading companies featuring the latest technology, services, and products in physiatry and rehabilitation. We're also hosting fun activities that you won't want to miss!

## SELFIE STATION!

Pop in to capture a pic or gif by yourself or with friends to keep or share on social media anytime on Thursday and Friday. Don't forget to tag #Physiatry26!

Sponsored by: **UPMC**  
LIFE CHANGING MEDICINE

## CUDDLE BREAKS

We'll have adorable puppies and kittens to play with and cuddle. Take a break and enjoy this stress-busting experience at booth 223 on Thursday and Friday, sponsored by Encompass Health.

Sponsored by: **Encompass Health**

## PICKLEBALL TOURNAMENT

Which institution will take home the trophy? Physiatry Foundation will be hosting the inaugural pickleball games on Thursday with the championship on Friday and open play on Saturday.

Sponsored by: **Encompass Health**



## GENERAL EXHIBIT HOURS

Stop by the 1st Floor Main Hall for refreshment breaks and opportunities to meet our fantastic exhibitors.

**Wednesday, February 18**

**Exhibitor Setup**  
8:00AM - 6:00PM

**Thursday, February 19**

**Refreshments Break & Demo Pods**  
10:30AM - 11:15AM and 3:00PM - 3:45PM

**Lunch & Learn**  
12:30PM - 1:30PM

## WELCOME RECEPTION & KICK-OFF PARTY

6:30PM - 8:00PM

Join us for an Old San Juan-Style Street Party! Help us kick-off the week with drinks, hors d'oeuvres, and a few surprises.

**Friday, February 20**

**Refreshments Break & Demo Pods**  
10:30AM - 11:15AM and 3:00PM - 3:45PM

**Lunch & Learn**  
12:30PM - 2:00PM

**Saturday, February 21**

**Breakfast & Farewell to Exhibitors**  
10:00AM - 11:15AM

## IPSEN ANATOMY & LEARNING LABS

There is no fee to attend, registration is not required, and seating is available on a first-come, first-serve basis.

**Thursday, February 19**

**Upper Limb Spasticity & Injection Lab**  
10:30AM - 11:30PM

**Lower Limb Spasticity & Injection Lab**  
3:00PM - 4:00PM

**Friday, February 20**

**Hands-on Ultrasound & Injection Anatomy Lab**  
12:30PM - 2:00PM - LUNCH PROVIDED

**Adult Spasticity Diagnosis & Injection Lab**  
3:00PM - 4:00PM

## DEMONSTRATION PODS

Join us for a small group presentation and hands-on demonstrations. Coffee and light refreshments will be served. There is no fee to attend, registration is not required, and seating is available on a first-come, first-serve basis.

**Thursday, February 19**

**Critical Care Hands-On ITB Pump Refill Demo**  
10:30AM - 11:15AM

Practice your intrathecal baclofen pump refill technique with Gablofen pre-filled syringes.

Sponsored by: **Piramal**

**The Role of Animals in the Inpatient Rehabilitation Setting**  
3:00PM - 3:35PM

Sponsored by: **Encompass Health**

**Friday, February 20**

**Adult Spasticity**  
10:30AM - 11:15AM

Connect with a leading and well-known expert to receive hands-on injection training and discuss real-world challenges in Spasticity management.

Sponsored by: **abbvie**

**Chronic Migraine and Cervical Dystonia**  
3:00PM - 3:45PM

Connect with a leading and well-known expert to receive hands-on injection training and discuss real-world challenges in Chronic Migraine and Cervical Dystonia management.

Sponsored by: **abbvie**



# Awards & Recognitions



We are excited to share with you the winners of the 2026 AAP Awards! These individuals have made significant contributions to the specialty of physiatry, the AAP, and the rehabilitation community at large.

THANK YOU TO THE  
FOLLOWING INDIVIDUALS  
FOR THEIR SERVICE ON  
THE AAP'S BOARD OF  
TRUSTEES!

- Christopher Visco, MD  
President  
Pablo Celnik, MD  
President-Elect  
Karen Kowalske, MD  
Past President  
Sara Cuccurullo, MD  
Secretary/Treasurer  
Leslie Rydberg, MD  
Sheital Bavishi, DO  
W. David Arnold, MD  
Venu Akuthota, MD  
Walter Frontera, MD, PhD  
Danielle Perret Karimi, MD  
Natasha Romanoski, DO  
Prakash Jayabalan, MD, PhD  
Allison Bean, MD, PhD  
Michael Fredericson, MD  
Mario Giraldo-Prieto, MD  
Ashlee Jaffe, MD  
Felicia Skelton-Dudley, MD  
Monica Verduzco-Gutierrez, MD  
Eric Jones, MD  
Kayleigh Crane  
Steven Summer (public member)

Join us for breakfast as we honor the following award recipients at the Physiatry '26 Awards Ceremony, Saturday, February 21, beginning at 7:30am, Ballroom A on the 3rd Floor of the Convention Center.

2026 AAP AWARD WINNERS

- DISTINGUISHED ACADEMICIAN AWARD**  
Craig McDonald, MD; UC Davis
- EARLY CAREER ACADEMICIAN AWARD**  
Dan Cushman, MD; University of Utah  
Ryan Solinsky, MD; Mayo Clinic
- MCLEAN OUTSTANDING RESIDENT/FELLOW AWARD**  
Colette Piasecki-Masters, MD; Spaulding Rehabilitation Hospital/Harvard Medical School
- AAP OUTSTANDING SERVICE AWARD**  
Brad Dicianno, MD; University of Pittsburgh Medical Center  
Prakash Jayabalan, MD, PhD; Shirley Ryan AbilityLab
- OUTSTANDING MENTOR AWARD**  
Vu Nguyen, MD; University of Alabama at Birmingham
- OUTSTANDING STUDENT INTEREST GROUP AWARD**  
Rocky Vista University College of Osteopathic Medicine  
Student Chair: Holly Williamson  
Faculty Advisor: Lauren Rudolph, MD
- INNOVATION & IMPACT IN EDUCATION AWARD**  
Daniel Daneshvar, MD, PhD; Spaulding Rehabilitation Hospital/Harvard Medical School  
Leslie Rydberg, MD; Shirley Ryan AbilityLab
- CAROLYN BRADDOM RITZLER RESEARCH AWARD**  
David Morgenroth, MD; University of Washington
- DISTINGUISHED MEMBER AWARD**  
Larry Robinson, MD; University of Toronto

AMERICAN JOURNAL OF PHYSICAL MEDICINE & REHABILITATION (AJPM&R) AWARDS

- EXCELLENCE IN RESEARCH WRITING AWARD**  
Effect of Wearable Robot-Assisted Gait Training on Balance and Walking Ability in Subacute Stroke Patients  
Yonghoon Kim, PT, MS, Suhyeon Baek, PT, Reema Priyanka Suram, PT, Rida Fatima, PT, Sun-Joung Leigh An, OT, OTD, Yonggeun Hong, DVM, PhD
- Effects of Vibration Therapy on Muscle Strength, Shoulder Range of Motion, and Muscle Biomechanical Properties in Patients With Breast Cancer Undergoing Radiotherapy: A Randomized Controlled Trial  
Özlem Feyzio lu, Selvi Dinçer, MD, Binnur Dönmez Yılmaz, MD, Tülay Çevik Saldıran, Özgül Öztürk

- ERNEST W. JOHNSON EXCELLENCE IN RESEARCH WRITING IN-TRAINING AWARD**  
Corticosteroids, Dosing, Sacroiliac Joint, Fluoroscopy, Intraarticular, Injections  
William Naber, DO, Darin Scribner, DO, Claire Kalpakjian, PhD, Rishi Bakshi, DO
- WILLIAM RUSH DUNTON, JR, MD AWARD (TOP REVIEWER)**  
James Sliwa, MD, Shirley Ryan AbilityLab

2026 AAP PROGRAM FOR ACADEMIC LEADERSHIP (PAL) GRADUATES

- Unoma Akamagwuna, MD, Baylor College of Medicine  
Cody Andrews, MD, University of Michigan  
Priya Bolikal, MD, Cincinnati Children's Hospital  
Sima Desai, MD, MS, Atrium Health Carolinas Rehabilitation  
Raju Dhakal, MD, Spinal Injury Rehabilitation Center  
Stephen Hampton, MD, Penn Medicine  
Jennifer Hankenson, MD, University of Mississippi Medical Center  
Adam Lamm, MD, MA, Mary Free Bed Rehabilitation Hospital  
Nimish Mittal, MBBS, MD, MSc, University of Toronto  
Lindsay Mohny, DO, Medical University of South Carolina  
Diana Molinares, MD, University of Miami  
Aditya Raghunandan, MD, UT Health San Antonio  
Asad Siddiqi, DO, Weill Cornell Medical College / NewYork-Presbyterian Brooklyn Methodist Hospital  
Juliet Zakel, MD, MetroHealth Rehabilitation Institute

2026 AAP REHAB MEDICINE SCIENTIST TRAINING PROGRAM (RMSTP) GRADUATES

- Ronald Cotton, MD, PhD, Shirley Ryan AbilityLab  
Justin Huber, MD, MS, University of Kentucky  
Shanti Pinto, MD, Spaulding Rehabilitation/Harvard Medical School  
Ishan Roy, MD, PhD, Shirley Ryan AbilityLab  
Ryan Solinsky, MD, Mayo Clinic  
Sruthi Thomas, MD, PhD, Baylor College of Medicine

BEST SCIENTIFIC PAPER & TOP POSTER AWARDS

We will be awarding cash prizes for outstanding abstract submissions related to education, leadership, and research-oriented work in physiatry. These awards will be granted for the extra effort that goes into preparing top-caliber presentations!

Winners will be announced via email and social media after the conference.





## To empower the world's best rehab team, we built the world's best rehab facility

Christine E. Lynn Rehabilitation Center for The Miami Project to Cure Paralysis at UHealth/Jackson Memorial bolsters 72 inpatient suites, eight pediatric inpatient suites, 16 handicapped accessible rooms, an outpatient clinic, and inpatient and outpatient gyms.

### Ranked top 3% in the nation by U.S. News & World Report

Education and training – Unmatched medical education in one of the most international cities in the world.

#### Education and training programs:

- Residency program
- Brain injury medicine fellowship program
- Spinal cord injury fellowship program
- Cancer rehab fellowship program
- Medical student rotation program
- Observership program



Scan QR code to learn more about our education programs, research opportunities, and partnerships

### Comprehensive rehabilitation

#### With our expert care, we can help you get your life back

UHealth Jackson Rehabilitation Care is proud to share our decades of experience with comprehensive inpatient and outpatient rehabilitation services for children, adolescents, and adults throughout South Florida. We are dedicated to achieving the best possible outcomes for every patient, every day.

#### International program – Hemispheric hub providing one-of-a-kind, all-in-one medical care to patients worldwide

Our prime location in the heart of Miami, one of the most international cities in the world, makes UHealth Jackson Rehabilitation Care the ideal hub for diverse groups of caregivers and patients.

#### Research opportunities

The Department of Physical Medicine and Rehabilitation currently has six sponsored research programs, one of which is funded by the National Institutes of Health, a premier, internationally recognized medical research center.

#### Accreditation



Phone: **305-243-6605** | Residency email: [cdavis@med.miami.edu](mailto:cdavis@med.miami.edu)

Visit us: <https://med.miami.edu/departments/physical-medicine-and-rehabilitation/education>

**UHealth Jackson**  
Rehabilitation Care  
CHRISTINE E. LYNN REHABILITATION CENTER  
FOR THE MIAMI PROJECT TO CURE PARALYSIS

# UPMC REHABILITATION INSTITUTE

*Advancing the science and practice  
of physical medicine and rehabilitation.*



- Top ranked for NIH funding
- **260+** inpatient beds across **12** units
- **70+** renowned faculty members
- **80+** outpatient locations
- **4** ACGME-accredited fellowships, 1 innovative spine care fellowship
- Ranked **4<sup>th</sup>** by Doximity for best rehabilitation residency program in the country
- UPMC Mercy is nationally ranked **#14** in rehabilitation by *U.S. News & World Report*

Learn how our team constantly evolves to ensure that our patients receive the best in physical medicine and rehabilitation:  
**UPMC.com/Rehab.**

**UPMC** | **REHABILITATION  
INSTITUTE**



# Connect & Collaborate



## RFPD Networking Events

Grab a bite and enjoy a break with your peers and our sponsors.

### Residency and Fellowship Program Directors (RFPD) Networking Reception

Tuesday, February 17 | 5:00PM-6:30PM

Location: Outdoor Terrace, 3rd Floor

Sponsored by:




THERAPEUTICS

Following the RFPD workshop, join with your friends from PM&R residency programs across the country for hors d'oeuvres, cocktails, and company.

### RFPD Workshop Breakfast Symposium

Wednesday, February 18 | 7:00AM - 8:00AM

Location: Ballroom B, 3rd Floor

Sponsored by: 

Emerging Leaders in Spasticity, a professional education and training program created specifically to help PGY3/PGY4 Residents cultivate an elevated approach to Spasticity disease management. Find out how Residents from your institutions can participate in this program and boldly lead the future of Spasticity.

### RFPD Roundtable Lunch

Wednesday, February 18 | 12:00PM - 1:00PM

Location: Ballroom B, 3rd Floor

Sponsored by: 


While connecting with your peers, discover educational options available from Ipsen to enhance your programs. Content will include an overview of educational offerings—from didactic to hands-on programs—covering disease education, anatomy, and product-specific insights, including a look at some of the anatomical models used in training.

## Spasticity X - Exclusive Educational Experiences Powered by Our Sponsors

### Visionary Workshop Sponsor

Hands-On Ultrasound Education for Spasticity Management: MUSICA session (Muscle Ultrasound for Spasticity Intelligent Care)

Wednesday, February 18, 2026 | 1:00PM - 5:00PM

Sponsored by: 

Join us for an engaging, in-person educational experience focused on advancing your understanding and application of ultrasound in spasticity management. Guided by our expert steering committee, this interactive session will highlight evidence-based approaches, clinical considerations, and practical insights to support informed and confident use of ultrasound in your practice.

Participants will explore real-world scenarios, observe expert techniques, and engage in guided hands-on learning—including the opportunity to practice ultrasound assessment on real spasticity patients—to deepen their clinical knowledge and enhance injection decision-making.

**Please note:** Space is limited. For the most meaningful educational experience, we recommend participants have at least 2 years of experience injecting botulinum toxin with ultrasound.

**RSVP required, stop by the registration desk.**

### Leader's Luncheon Sponsor

Developing a Spasticity Treatment Plan: A Case-Based Dialogue

Tuesday, February 17, 2026 | 12:00PM - 1:00PM

Sponsored by: 

**Presenter:** Monica Verduzco-Gutierrez, MD - UT Health San Antonio, San Antonio, TX

**Presenter:** Shivani Gupta, DO - Attending Physician, Advocate Christ Medical Clinic, Chicago, IL

Join us for a dynamic, patient case-based session designed to elevate your understanding of adult spasticity and its treatment. Program will be based on a patient case and includes live model demonstration, audience interaction around muscle selection and discussion of optimal approaches. This is a great opportunity to learn and sharpen skills.

### Champion's Breakfast Sponsor

Meet LIAM: Elevating Upper Limb Spasticity Training with Precision and Innovation

Wednesday, February 18, 2026 | 7:00PM - 8:00AM

Sponsored by:



THERAPEUTICS

**Presenter:** Gerard Francisco, MD

Moderated by expert faculty, this session will feature an interactive tool demonstrating approaches to botulinum toxin injection techniques for upper limb spasticity.

### Welcome Reception Sponsor

Tuesday, February 17, 2026 | 5:00PM - 6:00 PM

Sponsored by:



Join us for a Welcome Mingle featuring light hors d'oeuvres and drinks as you connect with attendees and industry leaders.

## Symposiums


Join us for the following activities hosted by our amazing supporters. Unless otherwise noted, there is no fee to attend, registration is not required, complimentary refreshments will be served, and seating is first-come, first-served.

### Hot Breakfast Symposium:

#### Step Into the Spasticity Experience

Thursday, February 19 | 7:00AM - 8:00AM

Location: Ballroom B, 3rd Floor

Sponsored by: 

Step into a fast-paced, hands-on patient simulation where you call the clinical shots. Using a collaborative learning platform, you'll navigate a realistic Spasticity case from first presentation to treatment planning—hitting key decision points and applying evidence-based strategies along the way.

### Lunch & Learn: Meet LIAM

#### Elevating Upper Limb Spasticity Training with Precision and Innovation

Thursday, February 19 | 12:30PM - 1:30PM

Location: Expo Hall

Sponsored by:




THERAPEUTICS

Moderated by expert faculty, this session will include an interactive injection model, a live demonstration, and hands-on practice to illustrate approaches to botulinum toxin injection techniques for upper limb spasticity.

### Coffee Chat: Emerging Leaders in Spasticity Information Session

Friday, February 20 | 7:00AM - 8:00AM

Location: 204

Sponsored by: 

Calling all PGY3s and 4s! Are you interested in learning more about the future of Spasticity? Stop by and meet with a recognized leader to learn all about AbbVie's exclusive program and how you can participate.

### Lunch & Learn: Hands-On Ultrasound and Injection Lab

Friday, February 20 | 12:30PM - 2:00PM

Location: Expo Hall

Sponsored by: 

Learn the basics or refine your technique in this expert-led work session with practical ultrasound instruction and an opportunity to practice injection on cadaver limbs. This interactive session aims to enhance clinical proficiencies and improve patient care.

## Other Special Sponsored Events

Thank you to the following sponsors for their support of these special networking events.

### Administrative Directors Luncheon

Friday, February 20 | 12:30PM - 1:30PM

Location: 104 AB

Sponsored by:



THERAPEUTICS

Administrative Directors are invited to relax and network over lunch.

### Residents & Fellows Networking Night

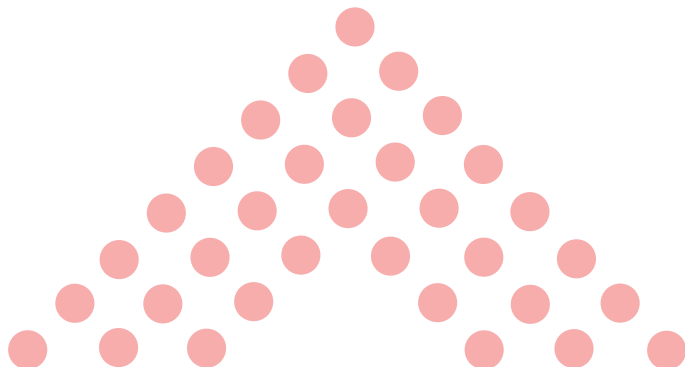
Friday, February 20 | 7:30PM - 9:00PM

Location: Sheraton Puerto Rico Resort & Casino, Poolside

Supported by: 

Unwind poolside with food, drinks, and cornhole while making new connections.

**RSVP required**





# MichiganAnswers™

## PHYSICAL MEDICINE & REHABILITATION

Delivering excellence in interdisciplinary clinical care and research, education of health care professionals and advocacy for individuals with disabilities since 1950.



Scan to  
Learn More



## PUSHING THE BOUNDARIES OF REHABILITATION



We are proud of our faculty as they expand our knowledge and practice of neurorehabilitation.

### Basic Science Investigations:

Modification of inflammatory risk factors that predispose to dementia after traumatic brain injuries (TBI).

Investigator: Dr. Randel Swanson

Development of M-Xene bioelectrodes to analyze the neurophysiology, neuroimaging and neurochemistry of TBI.

Investigator: Dr. Flavia Vitale

Robotic Rehabilitation of infants.

Investigator: Dr. Michelle Johnson

### Clinical Investigations:

Defining the controversial "Havana Syndrome" among employees of the US State Department.

Investigators: Drs. Randel Swanson and Stephen Hampton

Behavior economics in stroke and Parkinson.

Investigator: Dr. Kimberly Waddell

Randomized controlled trials: In home, occupational therapy-driven caregiver training for survivors of TBI; and treatment of TBI-related depression using behavioral activation.

Investigators: Drs. Kelly Heath, Randel Swanson, and Keith Robinson

### Educating the Next Generation:

Brain Injury Services.

Medical Director: Dr. Jeremy Charles

Michael J. Crescenz Veterans Affairs Medical Center.

Service Chief/Medical Director: Dr. Kelly Heath

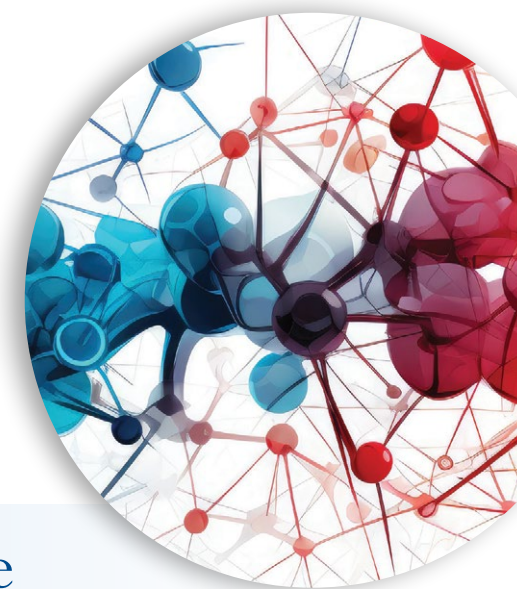
Pediatric to young adult transitional programs.

Drs. Benjamin Abramoff, Kelly Heath, and Patricia Orme

Pioneering cryoneurolytic approaches to manage spasticity.

Dr. Stephen Hampton

Brain Injury Medicine Fellowship: Director: Dr. Kelly Heath



Benjamin Abramoff  
MD, MS



Jeremy Charles  
MD



Stephen Hampton  
MD



Kelly Heath  
MD



Michelle Johnson  
PhD



Randel Swanson  
DO, PhD



Flavia Vitale  
PhD



Kimberly Waddell  
PhD, MSCI, OTR/L



Penn Medicine

TIMOTHY R. DILLINGHAM, MD, MS  
CHAIR, DEPARTMENT OF PHYSICAL MEDICINE AND REHABILITATION  
EMAIL: [Timothy.Dillingham@pennmedicine.upenn.edu](mailto:Timothy.Dillingham@pennmedicine.upenn.edu)

FOLLOW US AT: [f](https://www.facebook.com/pennpmr) [i](https://www.instagram.com/pennpmr) [t](https://www.tiktok.com/@pennpmr)  
@pennpmr



# Exhibitor Guide

Visit these exhibitors in the Expo Hall on the first floor of the Puerto Rico Convention Center.



## **AANEM Booth 625**

## **AAP Member Hub Booth 325**

Stop by the AAP Member Hub in the Expo Hall during refreshment breaks and lunch to meet leaders from across our key programs and learn what's new. Throughout the meeting, we'll host dedicated times to connect with experts from the AAP Regenerative Rehabilitation Coalition (ARRC), the Research Committee, the Membership Committee, and more. Check the App for the full schedule and plan your visit!

## **AbbVie Booth 501**

AbbVie's mission is to discover and deliver innovative medicines that solve serious health issues today and address the medical challenges of tomorrow. We strive to have a remarkable impact on people's lives across several key therapeutic areas. For more information about AbbVie, please visit us at [abbvie.com](http://abbvie.com). Follow @abbvie on Twitter, Facebook, Instagram, YouTube and LinkedIn.

## **American Academy of Physical & Rehabilitation Medicine (AAPM&R) Booth 125**

The AAPM&R is the national medical specialty organization representing more than 8000 physicians who are specialists in PM&R. AAPM&R is the only organization exclusively serving the needs of practicing PM&R physicians. It serves its member physicians by advancing the specialty of PM&R, promoting excellence in physiatric practice, and advocating on public policy issues related to persons with disabling conditions. AAPM&R's scientific peer-reviewed journal is PM&R.

## **American Board of Physical Medicine and Rehabilitation (ABPMR) Booth 527**

The ABPMR is the certifying board for PM&R and seven subspecialties in the United States. The ABPMR's mission is to protect the public by setting competency standards for physiatry and its subspecialties through the certification process, including initial certification and continuing certification requirements.

## **Amneal Booth 507**

The Canadian Association of Physical Medicine and Rehabilitation is a National Specialty Society that represents Canadian physiatrists and promotes their pursuit of excellence in the field of physical medicine and rehabilitation. The CAPM&R was founded in 1952 and has over 400 members today. The CAPM&R is an Accredited Provider for the Maintenance of Certification Program of the Royal College of Physicians and Surgeons of Canada.

## **Atrium Health Carolinas Rehabilitation Booth 307**

Ranked #7 Best nationally, Carolinas Rehabilitation is the official teaching hospital of Wake Forest University School of Medicine, with our physicians serving as faculty in its PM&R department. Renowned for 13 CARF-accredited programs, including the world's first CARF-accredited Oncology Rehab Program, and being the only U.S. member of World Rehabilitation Alliance. Celebrating 75 years, our board-certified physicians and therapists transform the lives of adults/children recovering from catastrophic injuries and complex conditions—one patient at a time.

## **Atrium Health EQUADR Booth 307**

EQUADR (Exchanged Quality Data for Rehabilitation) is a listed Patient Safety Organization (PSO). It was the first rehabilitation specific PSO. EQUADR enables inpatient rehabilitation hospitals to benchmark patient safety and quality outcomes and share best practices within the federal confidentiality protections of a PSO. With over 50 members, it has averted over \$20.6 million of harmful events. Stop by Booth #307 to learn more about how to become a member today!

## **Baptist Health South Florida Booth 103**

## **Basic Home Infusion Booth 724**

Basic Home Infusion (BHI) is a national home infusion company that provides a better quality of life through effective pump management. Specializing only in

Intrathecal therapies, BHI provides refills and management of implanted pumps for both spasticity and chronic pain.

## **Biogen Booth 525**

## **Cadwell Industries, Inc.**

## **Booth 301**

Cadwell has the only EMG with fully integrated Ultrasound for your Electrodiagnostic and MSK Ultrasound needs. No need to change machines or software. Complete an EDX study with the handheld StimTroller, keep patient files accessible with CadLink data management and finish the test quickly with our renowned report generator.

## **Canadian Association of Physical Medicine & Rehabilitation (CAPM&R) Booth 107**

The Canadian Association of Physical Specialty Society that represents Canadian physiatrists and promotes their pursuit of excellence in the field of physical medicine and rehabilitation. The CAPM&R was founded in 1952 and has over 400 members today. The CAPM&R is an Accredited Provider for the Maintenance of Certification Program of the Royal College of Physicians and Surgeons of Canada.

## **CARF International Booth 509**

Founded in 1966, CARF has been enhancing the quality of services in medical rehabilitation through standards reflecting best practices and leadership in the field internationally. CARF focuses on helping providers implement an internal process of continuous quality improvement and person-centered services to achieve outcomes desired by persons served.

## **Electrode Store Booth 526**

It takes more than talent and training to achieve perfection... It takes the right tools! Providing low prices and quick shipping of the best monopolar, concentric, and injection EMG needles, IOM probes, and disposable, adhesive surface electrodes since 1975. Updated website with secure online ordering at: [electrodestore.com](http://electrodestore.com).

## **Encompass Health Booth 707**

Encompass Health is the largest owner and operator of rehabilitation hospitals in the United States. With a national footprint that includes 161 hospitals in 37 states and Puerto Rico, the Company provides high-quality, compassionate rehabilitative care for patients recovering from a major injury or illness, using advanced technology and innovative treatments to maximize recovery. Encompass Health is ranked as one of Fortune's World's Most Admired Companies and Modern Healthcare's Best Places to Work in Healthcare.

## **Foundation for PM&R Booth 624**

The Foundation for PM&R is a 501(c)(3) nonprofit organization dedicated to restoring health, improving function, minimizing pain and enhancing quality of life for individuals with disability through research and education in the field of PM&R.

## **Ipsen Biopharmaceuticals Booth 601**

Ipsen Biopharmaceuticals, Inc. is the U.S. affiliate of Ipsen (Euronext: IPN; ADR: IPSEY), a global biopharmaceutical group focused on innovation and specialty care. The company is dedicated to providing hope for patients whose lives are challenged by difficult-to-treat diseases, focusing its resources, investments and energy on discovering, developing and commercializing new therapeutic options in oncology, neurosciences and rare diseases.

## **Ipsen Medical Affairs Booth 515**

Ipsen is a global biopharmaceutical company focused on innovation and specialty care. We develop and commercialize medicines in three key therapeutic areas Oncology, Rare Disease and Neuroscience. For more information, visit [ipsenus.com](http://ipsenus.com).

## **JFK Johnson Rehabilitation Institute Booth 207**

JFK Johnson Rehabilitation Institute is the Department of PM&R for Rutgers RWJ Medical School. Our nationally

renowned rehabilitation institute includes a full range of services from Orthopedics to Traumatic Brain Injury for adults and pediatric patients who are treated by top specialists in the country for every rehabilitation need.

## **Johns Hopkins Medicine Booth 609**

## **Kessler Institute for Rehabilitation Booth 508**

For over 75 years, Kessler Institute has been a leader in rehabilitation medicine with its unique combination of innovative treatment and cutting-edge technologies that help individuals rebuild their life following injury or illness. Our physician-led, interdisciplinary care teams develop individualized, evidence-based treatment plans to return patients to their daily activities and community. We're ranked No. 4 in the nation and are proud to be the highest ranking rehab hospital in New Jersey.

## **Mary Free Bed Rehabilitation System Booth 824**

## **Mayo Clinic Booth 222**

Mayo Clinic is leading the way in transforming health care. By finding new ways to prevent, diagnose and treat the most serious or complex conditions — and to develop and deliver more innovative, predictive, and personalized care — Mayo Clinic is creating new possibilities for people everywhere.

## **Medrina Booth 200**

Medrina is the nation's largest physiatry group and we have built a network of over 900 providers and 1500 facilities. Our PM&R experts collaborate in the care of patients in various settings, including skilled nursing facilities, assisted/independent living facilities, and inpatient rehab facilities. Our partnership offers the following benefits to improve physiatrists' current practice and optimize their workflow: Proprietary EHR System, Clinical Programming & Implementation, Revenue Cycle Transparency, Medical Malpractice Policy, Risk Diversification, and Compliance.

## **MedStar National Rehabilitation Hospital Booth 409**

## **Merz Therapeutics Booth 401**

Merz is a private, fifth generation, family-owned specialty healthcare company that has been developing and providing innovative medicines to patients across the globe for more than a century. As a global leader in neurosciences, Merz continues its commitment to improving lives of patients who suffer from movement disorders and spasticity.

## **Merz Medical Affairs Booth 407**

At Merz Therapeutics, we seek to address the unique needs of people who suffer from movement disorders, neurological conditions, and other health conditions that severely impact patients' quality of life. With our patient-centric approach, cutting-edge research and development efforts, highly-scientific medical affairs resources and dedicated commercial teams, we continue the advancement of new and individualized treatment standards, including botulinum toxin.

## **Miner/ Mason & Associates Booth 206**

MMA over 35 years ago and developed relationships across the Physical Medicine and Rehabilitation industry, with physicians, administrators and industry leaders alike. We truly get to know them as people and that has translated into strong bonds and mutual respect which has led to many, many successful searches for our clients. MMA is THE place to go for rehab physicians.

## **Mount Sinai Rehabilitation and Human Performance Booth 101**

Department of Rehabilitation and Human Performance at Mount Sinai has been dedicated to advancing human performance and solving barriers for those with disabilities since 1910. From sprains and strains to severe injuries affecting the spinal cord and brain, our world class specialists provide the highest level of evidence-based care.



Exhibitor Guide CONT.

**Natus Medical**  
**Booth 608**

For over 70 years, Natus has been providing advanced technology and market-leading solutions in EMG, NCS and EPs, building on the legacy of the most widely used and trusted names in the industry, including Nicolet, TECA and Dantec. Natus EMG solutions provide a trusted means to assess nerve and muscle function in patients and perform important research with greater certainty. For more information, please visit [natus.com](http://natus.com).

**Northwell Health**  
**Booth 224**

**PAM Health**  
**Booth 201**

**Penn State Health**  
**Booth 303**

The physical medicine and rehabilitation team at Penn State Health provides the most comprehensive rehabilitation services. As the only academic medical center in central Pennsylvania, we offer the latest approaches and a full spectrum of rehabilitative medicine and services. We have the expertise to treat even the most complex problems. We provide inpatient rehabilitation care, transitional care from the hospital to your home, rehabilitation facility, or a nursing facility, as well as outpatient rehabilitation.

**Physician Life Care Planning**  
**Booth 524**

Physician Life Care Planning is the nation's leading provider of damages valuation services that specialize in the formulation of compensatory economic damages for trial attorneys who are representing chronically and catastrophically ill or injured individuals. Our Life Care Planners are practicing medical doctors, Board-Certified in Physical Medicine & Rehabilitation and possess the required capacity to independently formulate and defend their medical opinions on future care needs.

**Piramal Critical Care**  
**Booth 300**

With nearly 20 years in the healthcare industry, Piramal Critical Care, (PCC) is committed to delivering critical care solutions to patients and healthcare providers worldwide. PCC is leading the way in intrathecal medicine with offerings for pain and spasticity management while representing a culture built on collaboration, innovation, and service.

**PMR Life Care Plans LLC**  
**Booth 622**

**Shepherd Center**  
**Booth 425**

Shepherd Center provides world-class clinical care, research, and family support for people experiencing the most complex conditions, including spinal cord and brain injuries, multi-trauma, traumatic amputations, stroke, multiple sclerosis, and pain. An elite center ranked by U.S. News as one of the nation's top hospitals for rehabilitation, Shepherd Center is recognized as both Spinal Cord Injury and Traumatic Brain Injury Model Systems, treating thousands of patients annually with unmatched expertise to help them begin again.

**Shirley Ryan AbilityLab**  
**Booth 215**

The Shirley Ryan AbilityLab, formerly the Rehabilitation Institute of Chicago (RIC), is the nation's #1-ranked provider of comprehensive physical medicine and rehabilitation care to patients from around the world and is the leader in research and development of the cutting-edge treatments and technologies in its field.

**Spaulding Rehabilitation Network / Harvard Medical School Department of PM&R**  
**Booth 521**

Spaulding Rehabilitation Hospital is the home of scientific, clinical and translational research for the Harvard Department of PM&R. Spaulding is one of two departments in the country to have all three Model Systems simultaneously and has been consistently ranked in the top 10 'Best Hospitals' by US News.

**Stonybrook University Hospital**  
**Booth 208**

**The Rehabilitation Institute at Sinai/ Sinai Hospital of Baltimore**  
**Booth 626**

At Sinai Rehabilitation Center we are focused on the following goals: Restoring maximum physical and functional potential, addressing psychological effects of disability, and minimizing the time it takes to return to daily activity.

**Thought Technology Ltd.**  
**Booth 523**

**TIRR Memorial Hermann**  
**Booth 400**

Continually recognized as one of America's Best Hospitals, TIRR Memorial Hermann is a national leader in medical rehabilitation and research.

**UHealth Jackson Rehabilitation Care**  
**Booth 406**

**University of Michigan HEAL K12**  
**Booth 725**

The Chronic Pain and Fatigue Research Center at the University of Michigan is the administrative home for the HEAL National K12 Clinical Pain Career Development Award. The HEAL K12 is a mentored career development program designed to provide protected time for clinician scientists to focus on training in and conducting clinical pain research.

**University of Michigan Medicine**  
**Booth 708**

# PHYSIATRY '27



Share your big ideas with peers, leaders and rising stars at **Physiatry '27**, the AAP's Annual Meeting in Long Beach, California.

Our large and diverse audience will be eager to learn the latest in research, education, patient care, technology, administration, career development and more. Present a lively, action-oriented session individually or as part of a team to build a strong reputation for your expertise and institution.



SUBMIT BY MARCH 23, 2026  
[PHYSIATRY.ORG/PROPOSALS](http://PHYSIATRY.ORG/PROPOSALS)





Physician Led  
Quality Driven



PAM Health is a proud  
sponsor of AAP 2026

**The Rehabilitation Institute at Sinai Hospital**  
of Baltimore has been a regional leader in rehabilitation  
and therapy services since 1965.

PROGRAMS INCLUDE

**CARF-accredited Brain Injury, Stroke, Amputee  
and Comprehensive Inpatient Care**

**Physical Medicine and Rehabilitation Residency Program**

**Comprehensive Pain Treatment**

**ABBEL Research Division**

We value our physicians and the expertise they bring,  
celebrating those who elevate quality care and  
champion our programs. Make a difference with us in  
full-time roles or medical directorships.



School of Medicine  
& Health Sciences  
THE GEORGE WASHINGTON UNIVERSITY

Visit Us Online:

PAMHealth.com



Contact Us:

Tricia Deno  
Enterprise Director  
Provider Acquisition & Retention  
717-216-3212  
TDeno@pamhealth.com



# The Gablofen<sup>®</sup> Difference

The only FDA-approved Intrathecal Baclofen packaged in prefilled syringes and factory-sealed vials.



## CONVENIENCE

- Prefilled syringes eliminates the need to draw, measure or dilute - 500 mcg/mL, 1000 mcg/mL and 2000 mcg/mL\*
- Factory-sealed vials eliminates need to break ampules, requires no dilution and reduces waste - 500 mcg/mL, 1000 mcg/mL and 2000 mcg/mL\*

## CLINICIAN SUPPORT

- Clinician training and ongoing education to support use accuracy
- On-site support increases injection confidence and comfort

## FASTER REFILLS

- Three concentration choices help optimize refill times
- Reduced number of steps enables faster refill prep

## COMPATIBILITY

- FDA-approved for up to 180 days of use in the Medtronic SynchroMed Programmable Pump\*

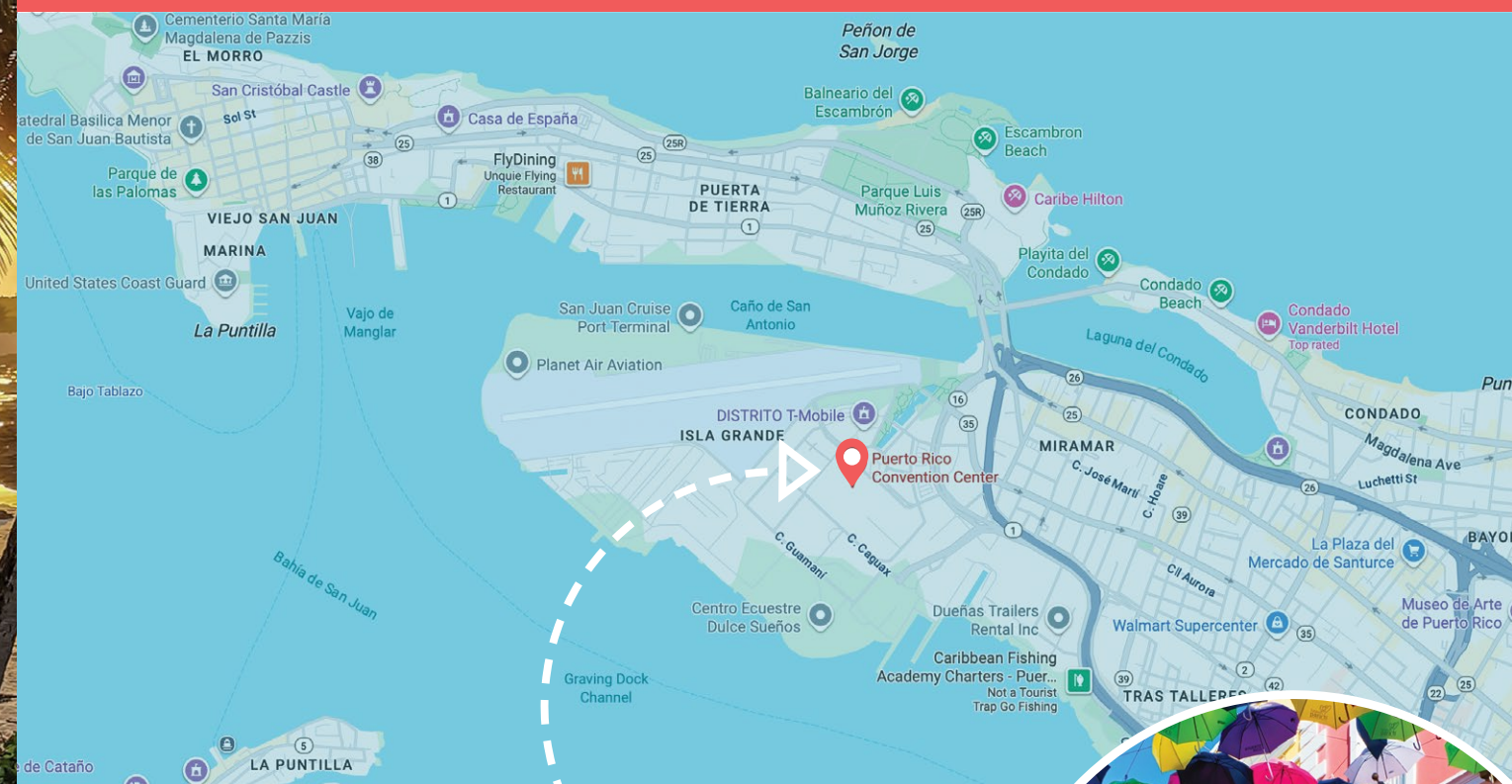


\*Gablofen [USPI]. Bethlehem, PA: Piramal Critical Care, Inc.; Sept. 2025  
MKT-GAB-2054

# Plan Your Stay

## SAN JUAN & THE PUERTO RICO CONVENTION CENTER

Most Physiatry '26 activities will take place at the Puerto Rico Convention Center in San Juan, PR. For more information and maps of the San Juan and Puerto Rico, please download and refer to our free meeting app.



## Lead, Learn, & Unwind

Discover the vibrant heart of San Juan, where history, art, flavor, and island energy all collide in the best possible way.

Make your trip unforgettable by diving into the endless experiences Puerto Rico serves up—from coastal adventures to rich cultural gems—and map out your “must-dos” before you touch down.



DISCOVER PUERTO RICO

Visit Us at Booth #300!

Learn more at [Gablofen.com](https://www.gablofen.com) today.



# Spaulding research in action

## Transforming rehabilitation medicine

Spaulding and its Department of Physical Medicine & Rehabilitation at Harvard Medical School support the work of more than 200 scientists, fellows, and research staff. Our pioneering investigators are internationally renowned leaders who publish nearly 400 research reports a year in prestigious medical journals — advancing the science of recovery and transforming the lives of rehabilitation patients.

Through the Schoen Adams Research Institute, we can — and we will — revolutionize recovery in our lifetime. We will advance translational research on Brain Injury and Concussion, Spinal Cord Injury, Stroke, Musculoskeletal Injury, Chronic Pain, and other debilitating conditions affecting one billion people globally.

[SpauldingRehab.org](https://SpauldingRehab.org)

## Thank You to the AAP's Academic Partners!

Interested in joining these renowned institutions?

Ask an AAP staff member or visit [physiatry.org/AcademicPartners](https://physiatry.org/AcademicPartners) to learn more about the growing benefits of department membership.







# Redefining Rehabilitation.

Visit us at AAP Booth #400.

At TIRR Memorial Hermann, we are redefining rehabilitation and reimagining recovery. After spinal cord injury, brain trauma, stroke, limb loss or other serious illness, adults and children from around the globe turn to us for personalized care. With robotic-assisted walking devices to advanced communication systems to groundbreaking research and innovative, one-of-a-kind programs, we are proud to help patients get back to the lives they love.

[memorialhermann.org/TIRR](https://memorialhermann.org/TIRR)



#### Join us!

We invite TIRR Memorial Hermann, UTHealth Houston, and Baylor College of Medicine alumni to our networking event. Scan the QR code for details. And bring a friend!

Advancing health. Personalizing care.

**TIRR**  
**MEMORIAL**  
**HERMANN**  
Rehabilitation &  
Research

TIRR is a registered trademark of TIRR Foundation.



## FROM RESEARCH TO REAL LIFE

MetroHealth is a national leader in rehabilitation research - and we use our research to give every person access to emerging and innovative treatments to advance rehabilitation.

It's one way we help patients who have experienced significant illnesses or injuries get back to the things that matter most.

**Learn more at [metrohealth.org/rehab](https://metrohealth.org/rehab)  
or call 216-778-4414.**

connect @metrohealthcle



#storiesofhope #fabrehab



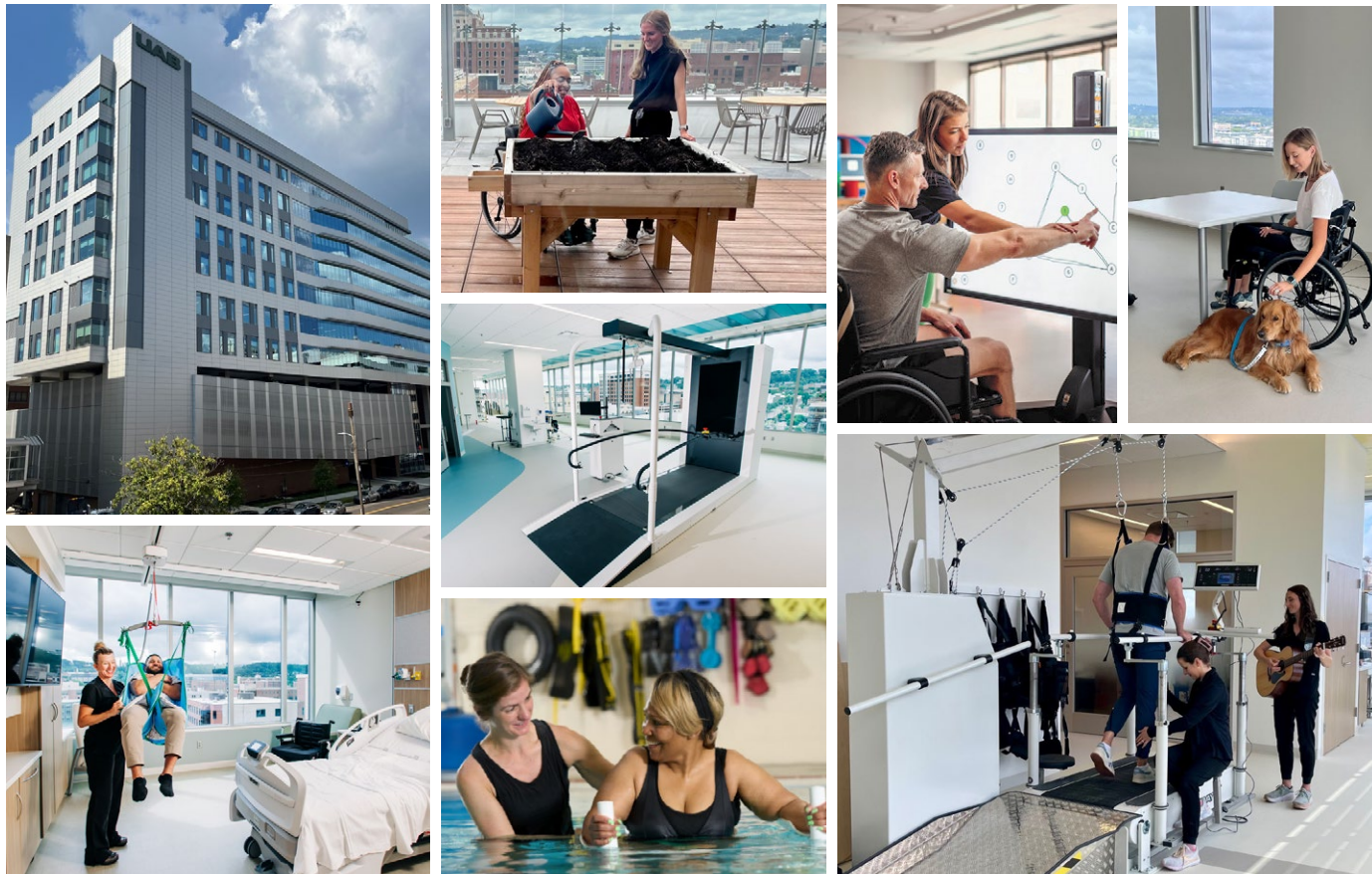
Jeanette Green, paralyzed from the chest down after a 1989 diving accident, reunites with the MetroHealth team to celebrate 30 years since receiving a pioneering hand-stimulation implant that helped restore her independence.



Scan the QR code to read more about Jeanette Green's Story of Hope

 **MetroHealth** Rehabilitation Institute





# CHANGING THE LANDSCAPE OF REHABILITATION

With sweeping views, cutting-edge therapy gyms, and 134 patient beds, UAB’s new inpatient Rehabilitation Pavilion promises to transform recovery for Alabamians and patients across the region. The brand new facility, opened in August 2025, focuses on neurorehabilitation for patients following stroke, brain injury, spinal cord injury, and other conditions.

## SPECIALIZED PROGRAMS & CLINICS:

- Amputee
- Adult Spina Bifida Clinic
- Brain Injury
- Cancer Rehabilitation
- CP Continuity Clinic
- Falls Clinic
- Interventional Pain Management
- Musculoskeletal Conditions
- Neuropsychology
- Occupational Medicine
- Orthotics & Prosthetics
- Spinal Cord Injury
- Sports Medicine
- Stroke
- Wound Care



Learn more about the UAB PM&R Residency Program.

**UAB MEDICINE**  
The University of Alabama at Birmingham  
uabmedicine.org

# PHYSIATRY FOUNDATION @ PHYSIATRY '26

## READY, SET, PICKLEBALL!

### 2nd Annual Pickleball Championship

Come cheer on your favorite Pickleball team in the Expo Hall. Who will dethrone last year's champs from Shirley Ryan AbilityLab—only time will tell!

#### MEDICAL STUDENT ANNUAL MEETING SCHOLARSHIPS

The Physiatry Foundation awarded 10 scholarships for medical students to attend this Annual Meeting—helping future leaders experience the energy, inspiration, and community that makes AAP unique.

#### MISSION ACCOMPLISHED

Join us in celebrating the **very first recipients of our Mission Innovation grants!** These bold initiatives are advancing education innovation, DEI, global outreach, and physician wellness across physiatry.

#### GIVE TODAY

Your support funds PAL, RMSTP, APPL, and RREMS scholarships, medical student programs, and innovative educational and leadership initiatives.

DONATE NOW

PHYSIATRY.ORG/PHYSIATRYFOUNDATION





Corporate office - AAP  
10461 Mill Run Circle, Suite 730  
Owings Mills, Maryland, USA 21117  
www.physiatry.org  
Phone: +1 (410) 654-1000

Thank you to our sponsors for their generous support.



\*as of December 1, 2025

GET SOCIAL WITH  
#PHYSIATRY26!

Download Our Free  
Meetings App →



SCAN ME